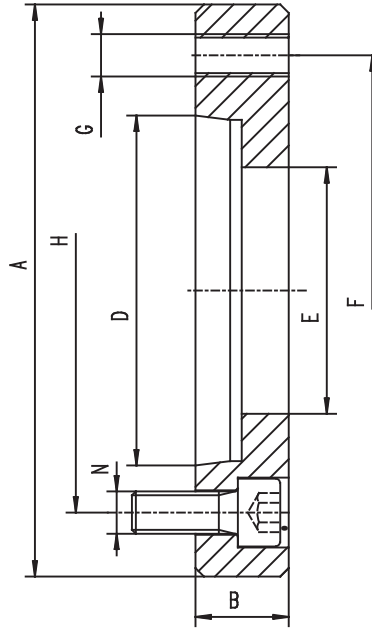




**FULLY-FINISHED ADAPTER PLATES FOR
4306, 4307, 32**, 35**, 36**, 37**, 38****

8217-1
TYPE A



W - Chuck diameter

Code No.	W*	Taper Size	A h6 [in]	B [in]	D [in]	E [in]	F [in]	G	H [in]	N	Weight [lbs]
7-933-328	32"	8	14.96	1.57	5.50	5.36	13.00	12xM24	6.75	6xM16	66,14
7-933-329	32"	11	14.96	1.57	7.75	7.59	13.00	12xM24	9.25	6xM20	52,91
7-933-345	32"	15	14.96	1.89	11.25	11.08	13.00	12xM24	13.00	6xM24	38,36
7-933-338	32"	8	17.72	1.57	5.50	5.36	14.50	12xM24	6.75	6xM16	92,59
7-933-339	32"	11	17.72	1.57	7.75	7.59	14.50	12xM24	9.25	6xM20	83,78
7-933-335	32"	15	17.72	1.89	11.25	11.08	14.50	12xM24	13.00	6xM24	74,96
7-933-409	40"; 49"	11	20.47	1.57	7.75	7.59	18.25	12xM24	9.25	8xM20	125,66
7-933-415	40"; 49"	15	20.47	1.57	11.25	11.08	18.25	12xM24	13.00	8xM24	116,84
7-933-420	40"; 49"	20	20.47	1.97	16.25	16.06	18.25	12xM24	18.25	8xM24	64,82
7-933-499	49"	11	28.35	1.97	7.75	7.59	25.50	12xM30	9.25	8xM20	291,01
7-933-505	49"	15	28.35	1.97	11.25	11.08	25.50	12xM30	13.00	8xM24	282,19
7-933-492	49"	20	28.35	1.97	16.25	16.06	25.50	12xM30	18.25	8xM24	224,87

- 1
- 2
- 3
- 4
- 5