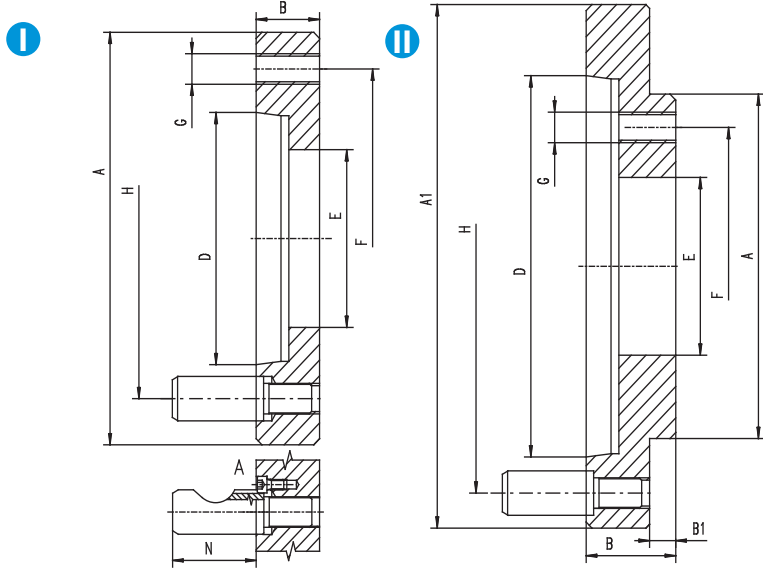


- 1
- 2
- 3
- 4
- 5

**FULLY-FINISHED ADAPTER PLATES FOR  
4304, 4305, 4306, 4307**

8247-0  
TYPE D



W - Chuck diameter    Z - adapter form

Code No.	W*	Taper Size	Z*	A h6 [in]	A1 [in]	B [in]	B1 [in]	D [in]	E [in]	F [in]	G	H [in]	N [in]	No. of studs	Weight [lbs]
7-938-084	8"	4	II	4.33	4.61	1.81	0.22	2.50	1.97	3.25	M10	3.25	1.27	3	6.83
7-938-085	8"	5	II	4.33	5.75	1.65	0.22	3.25	1.97	3.25	M10	4.13	1.50	6	9.92
7-938-086	8"	6	II	4.33	7.13	1.57	0.22	4.19	1.97	3.25	M10	5.25	1.74	6	14.33
7-938-105	10"	5	I	5.91	-	2.36	-	3.25	2.56	4.13	M12	4.13	1.50	6	14.77
7-938-106	10"	6	II	5.91	7.13	1.97	0.30	4.19	2.56	4.13	M12	5.25	1.74	6	17.64
7-938-108	10"	8	II	5.91	8.86	1.81	0.30	5.50	2.56	4.13	M12	6.75	2.00	6	24.25
7-938-125	12"	5	I	6.89	-	1.30	-	3.25	3.11	5.25	M16	4.13	1.50	6	3.97
7-938-126	12"	6	II	6.89	7.13	2.76	0.30	4.19	3.15	5.25	M16	5.25	1.74	6	24.69
7-938-128	12"	8	II	6.89	8.86	2.36	0.30	5.50	3.15	5.25	M16	6.75	2.00	6	32.41
7-938-129	12"	11	II	6.89	11.73	1.97	0.30	7.75	3.15	5.25	M16	9.25	2.39	6	42.77
7-938-166	16"	6	I	7.87	-	1.40	-	4.19	3.94	6.75	M16	5.25	1.74	6	8.16
7-938-168	16"	8	II	7.87	8.86	2.76	0.41	5.50	3.94	6.75	M16	6.75	2.00	6	36.38
7-938-169	16"	11	II	7.87	11.73	2.36	0.41	7.75	3.94	6.75	M16	9.25	2.39	6	52.47
7-938-175	16"	15	II	7.87	15.87	2.07	0.41	11.25	3.94	6.75	M16	13.00	2.74	6	18.52
7-938-206	20"	6	I	10.63	-	1.40	-	4.19	4.06	9.25	M20	5.25	1.74	6	29.76
7-938-208	20"	8	I	10.63	-	1.50	-	5.50	5.36	9.25	M20	6.75	2.00	6	28.66
7-938-209	20"	11	II	10.63	11.73	1.77	0.49	7.75	7.59	9.25	M20	9.25	2.39	6	31.53
7-938-215	20"	15	II	10.63	15.87	2.07	0.49	11.25	4.92	9.25	M20	13.00	2.74	6	34.83
7-938-258	25"	8	I	10.63	-	1.50	-	5.50	5.35	9.25	M20	6.75	2.00	6	34.83
7-938-259	25"	11	II	10.63	11.73	1.97	0.49	7.75	6.30	9.25	M20	9.25	2.39	6	87.08
7-938-265	25"	15	II	10.63	15.87	2.40	0.49	11.25	6.30	9.25	M20	13.00	2.74	6	86.20