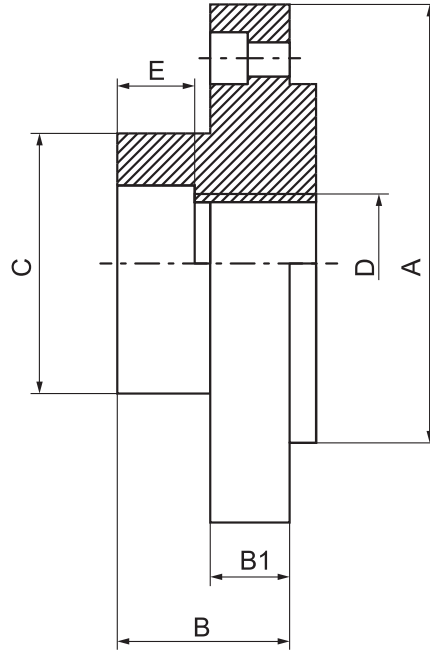




**FULLY MACHINED
THREADED ADAPTER PLATES**

8204

■ Adapters require machining on the pilot on the chuck side



W - Chuck diameter

Code No.	W*	Thread D	A [in]	B [in]	B1 [in]	C [in]	E [in]	Weight [lbs]
7-922-043	4"	1 - 10	3.94	1.50	0.55	1.97	0.50	5
7-922-045	4"	1-1/8 - 12W	3.94	1.50	0.55	1.97	0.56	5
7-922-046	4"	1-1/2 - 8	3.94	1.50	0.55	2.36	0.50	5
7-922-051	5"	M39 x 4	4.92	2.00	0.75	3.00	0.63	11
7-922-053	5"	2-3/16 - 10	4.92	1.61	0.69	3.11	0.63	11
7-922-063	6"	2-3/16 - 10	6.30	1.61	0.77	3.11	0.63	13

- 1
- 2
- 3
- 4
- 5