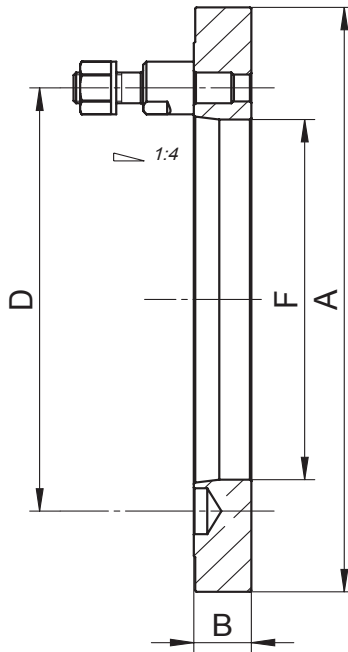


- 1
- 2
- 3
- 4
- 5

## SEMI-MACHINED ADAPTER PLATES

8232  
TYPE C

- Adapters for plain back self-centering and independent chuck
- Rough on the chuck side



W - Chuck diameter

Code No.	W*	Taper Size	A [in]	B [in]	F [in]	D [in]	Weight [lbs]
7-921-0430	4"	3	4.02	0.71	2.02	2.78	3.97
7-921-0530	5"	3	5.00	0.77	2.02	2.78	5.29
7-921-0540	5"	4	5.00	0.77	2.40	3.35	5.29
7-921-0630	6"	3	6.38	0.77	2.02	2.78	9.26
7-921-0640	6"	4	6.38	0.94	2.40	3.35	7.05
7-921-0650	6"	5	6.38	0.94	3.13	4.13	6.17
7-921-0660	6"	6	6.38	1.30	1.67	5.25	10.14
7-921-0840	8"	4	7.99	1.30	2.17	3.35	26.46
7-921-0850	8"	5	7.99	1.50	2.17	4.13	26.46
7-921-0860	8"	6	7.99	1.30	2.17	5.25	26.46
7-921-1050	10"	5	9.96	1.30	3.13	4.13	35.27
7-921-1060	10"	6	9.96	1.97	3.15	5.25	35.27
7-921-1080	10"	8	9.96	1.81	3.15	6.75	35.27
7-921-1250	12"	5	12.52	1.50	3.13	4.13	45.19
7-921-1260	12"	6	12.52	1.30	4.06	5.25	37.92
7-921-1280	12"	8	12.52	2.17	4.06	6.75	59.52
7-921-1290	12"	11	12.52	1.85	4.06	9.25	52.91
7-921-1680	16"	8	15.94	1.69	5.36	6.75	77.16
7-921-1690	16"	11	15.94	1.85	5.36	9.25	84.88
7-921-2080	20"	8	19.88	1.77	5.36	6.75	132.28
7-921-2090	20"	11	19.88	1.77	7.59	9.25	121.70
7-921-2580	25"	8	25.00	1.77	5.36	6.75	211.64
7-921-2590	25"	11	25.00	1.77	7.59	9.25	202.83
7-921-2650	25"	15	25.00	2.20	7.59	13.00	242.51
7-921-3290	32"	11	15.16	1.77	7.59	9.25	61.73
7-921-3450	32"	15	16.06	1.77	11.08	13.00	44.09
7-921-3350	32"	15	15.16	1.69	11.06	13.00	46.30
7-921-3490	32"	11	17.95	1.61	7.59	9.25	88.18
7-921-4150	40"	15	20.71	1.69	11.06	13.00	121.25
7-921-4020	40"; 49"	20	21.50	1.77	16.06	18.25	74.96
7-921-4950	40"; 49"	15	28.66	2.09	11.06	13.00	295.42
7-921-4920	49"	20	28.66	2.09	16.06	18.25	238.10