



3-JAW SELF-CENTERING SCROLL CHUCKS

- SMALL SIZE CHUCKS
- DIRECT THREADED MOUNT



- 1
- 2
- 3
- 4
- 5

3286



1 Set of solid reversible jaws



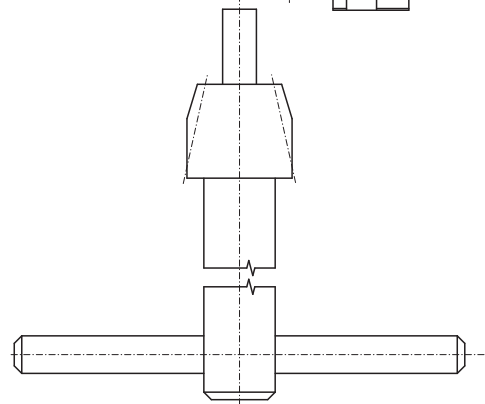
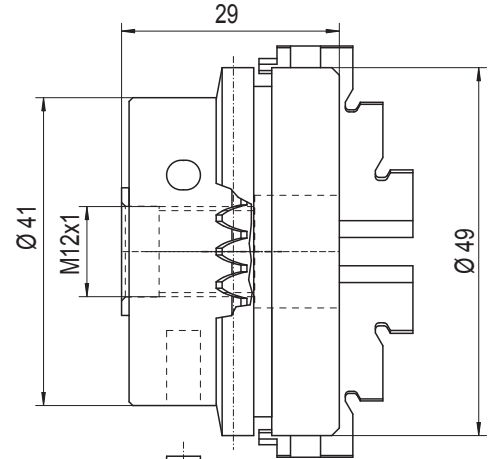
1 Wrench



- Very small turning diameter
- Suitable for lathes with a threaded spindle
- Can be used with both metal and wood

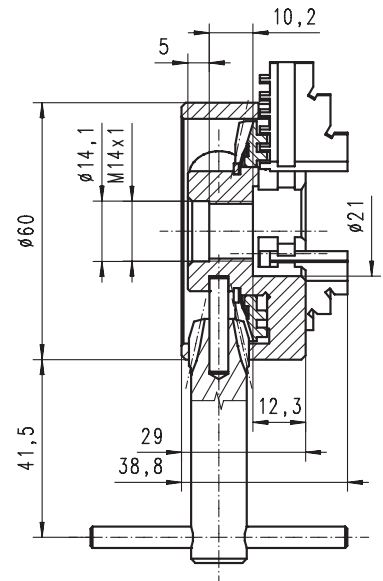
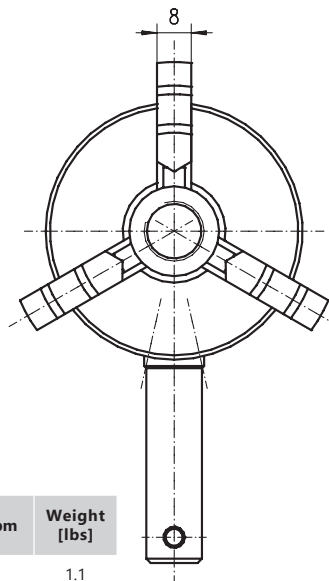
Chuck size 49mm

* All dimensions on the drawing are in [mm]

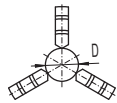


Chuck size 60mm

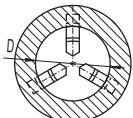
* All dimensions on the drawing are in [mm]



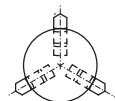
Chuck size 49, 60mm



D= Ø 0,5 x Ø 32



D= Ø 20 x Ø 75



D= Ø 20 x Ø 52

Code No.	Type	Chuck size [in]	Mounting	Max. rpm	Weight [lbs]
7-810-0112	3286-49	1.93	M12x1	4,000	1.1
7-810-0212	3286-60	2.36	M12x1	4,000	1.5
7-810-0214	3286-60	2.36	M14x1	4,000	1.5
7-810-0222	3286-2.3-8"-1/2"-20	2.36	1/2"-20	4,000	1.5
7-810-0225	3286-2.3-8"-3/4"-16	2.36	3/4"-16	4,000	1.5
7-810-0225S	3286-2.3-8"-16 BC	2.36	3/4"-16*	4,000	1.5

* Threaded mount for Sherline Lathes