



# 5C COLLET CHUCKS

- FORGED STEEL BODY
- PLAIN BACK OR D-TYPE DIRECT MOUNT



1

2

3

4

5

### 3911

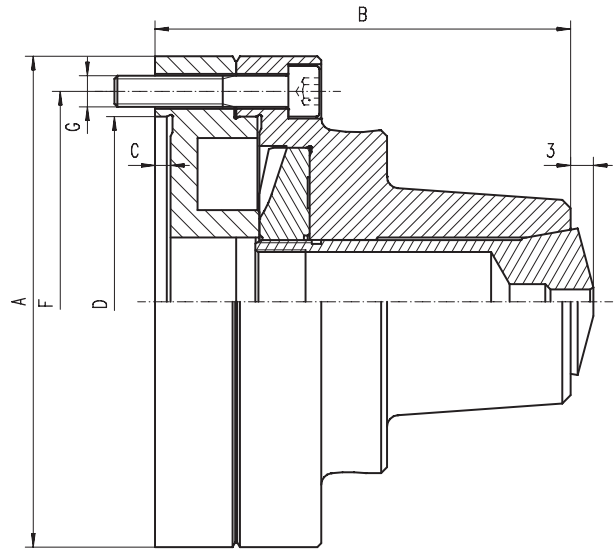


Standard accessories



1 Wrench + 1 Hex key

- Universal 5C collet chuck
- Plain back mounting
- The wrench operated scroll provides for uniform and distortion free clamping of workpieces while simultaneously allowing for a fast collet exchange
- Designed for use with 5C collets (385E) and can be used for turning, facing, boring, grinding and milling operations
- Collet 5C not included



Code No.	Type	A [in]	B [in]	C [in]	D [in]	F [in]	G	RPM	Weight [lbs]
7-862-0501	3911-5"-5C	4.96	4.23	0.16	3.74	4.25	3x5/16"-18	6000	11.9

### 3944

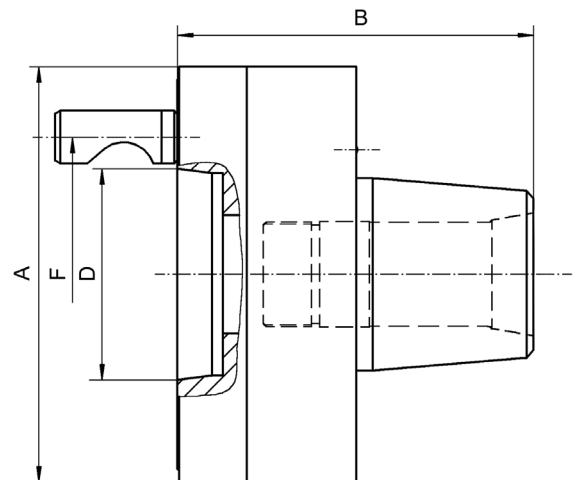


Standard accessories



1 Wrench + 1 Hex key

- Universal 5C collet chuck
- D1 direct mount
- The wrench operated scroll provides for uniform and distortion free clamping of workpieces while simultaneously allowing for a fast collet exchange
- Designed for use with 5C collets (385E) and can be used for turning, facing, boring, grinding and milling operations
- Collet 5C not included



Code No.	Type	A [in]	B [in]	D [in]	F [in]	RPM	Weight [lbs]
7-862-0511	3944-5"-4-5C	4.92	4.23	2.54	3.25	6000	12
7-862-0512	3944-5"-5-5C	4.92	4.23	2.54	3.25	6000	12