



5C MINI COLLET CHUCKS

- HIGH RPM
- FORGED STEEL BODY



3974

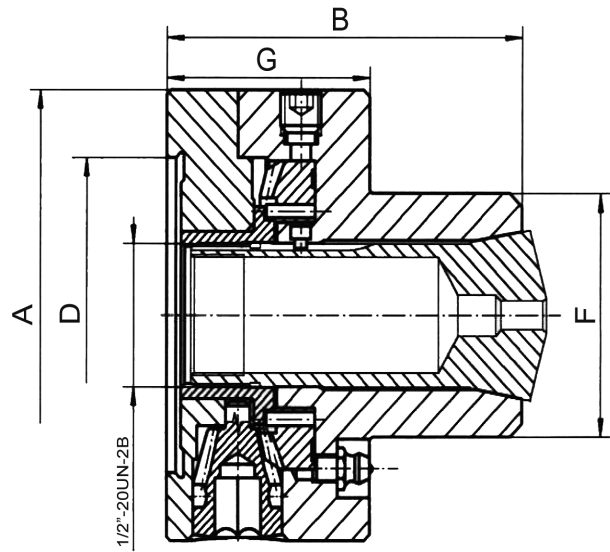


Standard accessories



1 Wrench + 1 Hex key

- Mini high-speed 5C collet chuck
- The wrench operated scroll provides for uniform and distortion free clamping of workpieces while simultaneously allowing for a fast collet exchange
- Designed for use with 5C collets (385E) and can be used for turning, facing, boring, grinding and milling operations
- Collet 5C not included



Code No.	Type	A [in]	B [in]	D [in]	F [in]	G [in]	RPM	Weight [lbs]
7-862-0401	3974-4"-5C	3.94	3.37	2.76	2.13	1.97	8000	7

3974-T

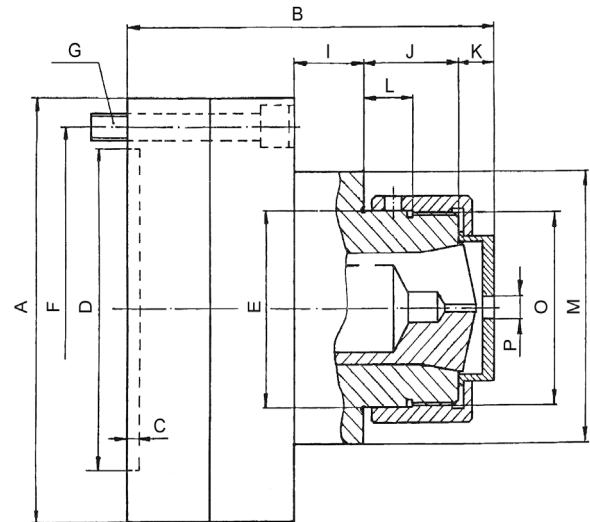


Standard accessories



1 Wrench

- 5C collet chuck with threaded nose
- Plain back mounting
- Max RPM 6000 1/min
- The wrench operated scroll provides for uniform and distortion free clamping of workpieces while simultaneously allowing for a fast collet exchange
- Designed for use with 5C collets (385E) and can be used for turning, facing, boring, grinding and milling operations
- Collet 5C not included



Code No.	Type	A [in]	B [in]	C [in]	D [in]	E [in]	F [in]	G [in]	I [in]	J [in]	K [in]	L [in]	M [in]	O [in]	P [in]	Weight [lbs]
7-862-0502	3974-5"-5CT	4.92	4.70	0.16	3.74	2.19	4.25	3 x 5/16"-18x2.17	0.89	1.22	0.47	0.63	3.15	2-3/16"-10UN-2A	0.24	12