



**3234**



Standard accessories

1 Set of hard solid ID jaws

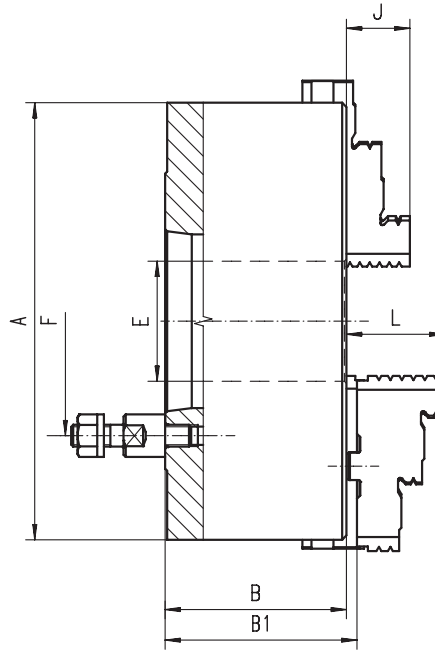
1 Set of hard solid OD jaws

1 Wrench

Spare parts 99-141

Technical data 142-148

Code No.	Type
7-806-0433	3234-4"-3
7-806-0553	3234-5"-3
7-806-0554	3234-5"-4
7-806-0653	3234-6"-3
7-806-0654	3234-6"-4
7-806-0655	3234-6"-5
7-806-0656	3234-6"-6
7-806-0853	3234-8"-3
7-806-0854	3234-8"-4
7-806-0855	3234-8"-5
7-806-0856	3234-8"-6
7-806-1056	3234-10"-6
7-806-1058	3234-10"-8
7-806-1256	3234-12"-6
7-806-1258	3234-12"-8
7-806-1259	3234-12"-11
7-806-1656	3234-16"-6
7-806-1658	3234-16"-8
7-806-1659	3234-16"-11
7-806-2058	3234-20"-8
7-806-2059	3234-20"-11
7-806-2559	3234-25"-11
7-806-2555	3234-25"-15



■ Ground working surfaces

A [in]	Taper Size	B [in]	B1 [in]	E [in]	F [in]	No. of Stud bolts	J [in]	L [in]	Weight [lbs]
3.94	3	3.15	-	0.79	2.95	3	0.63	-	6.61
4.92	3	2.76	2.94	1.26	2.95	3	0.79	1.57	11.02
4.92	4	2.76	2.94	1.26	3.35	3	0.79	1.57	11.02
6.30	3	3.21	3.40	1.65	2.95	3	1.26	1.69	19.84
6.30	4	3.21	3.40	1.65	3.35	3	1.26	1.69	19.84
6.30	5	3.21	3.40	1.65	4.13	4	1.26	1.69	19.84
6.30	6	3.58	3.77	2.03	5.25	4	1.14	1.77	41.89
7.87	3	3.58	3.77	2.17	2.95	3	1.14	1.77	41.89
7.87	4	3.58	3.77	2.17	3.35	3	1.14	1.77	41.89
7.87	5	3.58	3.77	2.17	4.13	4	1.14	1.77	41.89
7.87	6	4.07	4.22	2.17	5.25	4	1.34	2.09	70.55
9.84	6	4.07	4.22	2.99	5.25	4	1.34	2.09	70.55
9.84	8	4.07	4.22	2.99	6.75	4	1.34	2.09	70.55
12.40	6	4.63	4.83	4.06	5.25	4	1.69	2.24	112.44
12.40	8	4.63	4.83	4.06	6.75	4	1.69	2.24	112.44
12.40	11	5.51	5.71	4.06	9.25	6	1.69	2.24	112.44
15.75	6	5.06	5.41	4.06	5.25	4	2.17	2.64	222.67
15.75	8	5.06	5.41	5.35	6.75	4	2.17	2.64	222.67
15.75	11	5.06	5.41	5.35	9.25	6	2.17	2.64	222.67
19.69	8	5.75	6.17	5.35	6.75	4	2.36	3.11	330.69
19.69	11	5.75	6.17	7.48	9.25	6	2.36	3.11	330.69
24.80	11	6.50	6.94	7.48	9.25	6	2.76	3.43	604.07
24.80	15	6.50	6.94	9.92	13.00	6	2.76	3.43	604.07

Larger diameters available on page 82-93!

**3235**



Standard accessories

1 Set of hard top jaws

1 Set of hard master jaws

1 Wrench

Spare parts 99-141

Technical data 142-148

Type	Code No.
-	-
3235-5"-3	7-807-0553
3235-5"-4	7-807-0554
3235-6"-3	7-807-0653
3235-6"-4	7-807-0654
3235-6"-5	7-807-0655
3235-6"-6	7-807-0656
3235-8"-3	7-807-0853
3235-8"-4	7-807-0854
3235-8"-5	7-807-0855
3235-8"-6	7-807-0856
3235-10"-6	7-807-1056
3235-10"-8	7-807-1058
3235-12"-6	7-807-1256
3235-12"-8	7-807-1258
3235-12"-11	7-807-1259
3235-16"-6	7-807-1656
3235-16"-8	7-807-1658
3235-16"-11	7-807-1659
3235-20"-8	7-807-2058
3235-20"-11	7-807-2059
3235-25"-11	7-807-2559
3235-25"-15	7-807-2555