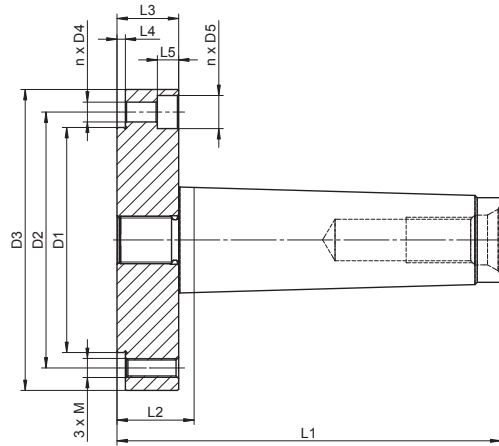


Please select an appropriate chuck

- 3-Jaw**
 - Type 3574 Page 32
 - Type 3575 Page 32
 - Type 3274 Page 33
 - Type 3275 Page 33
- 4-Jaw**
 - Type 3774 Page 44
 - Type 3775 Page 44
 - Type 3674 Page 45
 - Type 3675 Page 45



9156

DEAD

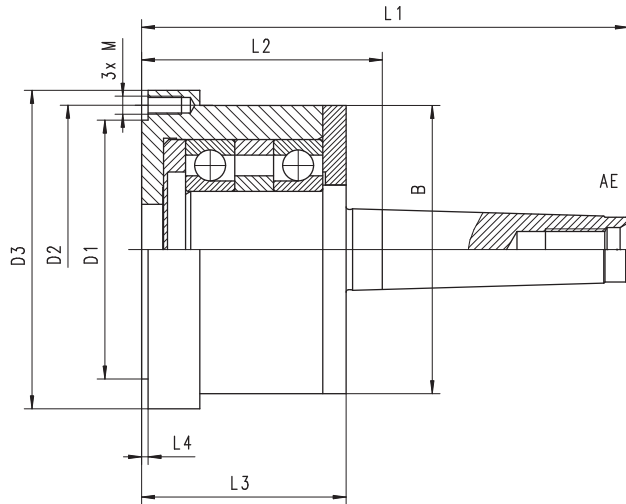
- Can replace typical center in machine tailstock
- Chuck not included, please select one of the matching types

Code No.	Type	W* [in]	Morse Taper	D1 [in]	D2 [in]	D3 [in]	D4 [in]	D5 [in]	L1 [in]	L2 [in]	L3 [in]	L4 [in]	L5 [in]	M	n	Weight [lbs]
7-915-0302	9156-3"-2	3.15	2	2.20	2.64	3.23	0.25	0.43	3.50	0.98	0.63	0.10	0.28	M6	3	1.54
7-915-0303	9156-3"-3	3.15	3	2.20	2.64	3.23	0.25	0.43	4.02	0.83	0.63	0.10	0.28	M6	3	1.76
7-915-0402	9156-4"-2	3.94	2	2.76	3.27	4.02	0.33	0.55	3.50	0.98	0.63	0.10	0.35	M8	3	2.43
7-915-0403	9156-4"-3	3.94	3	2.76	3.27	4.02	0.33	0.55	4.02	0.83	0.63	0.10	0.35	M8	3	2.65
7-915-0405	9156-4"-5	3.94	5	2.76	3.27	4.02	-	-	6.02	0.93	0.67	0.10	-	M8	3	5.07
7-915-0503	9156-5"-3	4.92	3	3.74	4.25	5.00	0.33	0.55	4.57	1.38	1.02	0.14	0.35	M8	3	5.73
7-915-0504	9156-5"-4	4.92	4	3.74	4.25	5.00	0.33	0.55	5.31	1.28	1.02	0.14	0.35	M8	3	6.17
7-915-0505	9156-5"-5	4.92	5	3.74	4.25	5.00	0.33	0.55	6.38	1.28	1.02	0.14	0.35	M8	3	7.94
7-915-0603	9156-6"-3	6.30	3	4.92	5.51	6.38	0.41	0.67	4.57	1.38	1.02	0.14	0.43	M10	3	9.04
7-915-0604	9156-6"-4	6.30	4	4.92	5.51	6.38	0.41	0.67	5.31	1.28	1.02	0.14	0.43	M10	3	9.48
7-915-0605	9156-6"-5	6.30	5	4.92	5.51	6.38	0.41	0.67	6.38	1.28	1.02	0.14	0.43	M10	3	11.24
7-915-0805	9156-8"-5	7.87	5	6.30	6.93	7.87	0.41	0.71	7.60	2.50	1.02	0.14	0.43	M10	3	18.08
7-915-0806	9156-8"-6	7.87	6	6.30	6.93	7.87	0.41	0.71	8.50	1.34	1.02	0.14	0.43	M10	3	21.38
7-915-1005	9156-10"-5	9.84	5	7.87	8.82	9.84	0.53	0.79	6.42	1.36	1.10	0.14	0.51	M12	6	23.81
7-915-1006	9156-10"-6	9.84	6	7.87	8.82	9.84	0.53	0.79	8.58	1.42	1.10	0.14	0.51	M12	6	30.20

W - Chuck diameter

Please select an appropriate chuck

- 3-Jaw**
 - Type 3574 Page 32
 - Type 3575 Page 32
 - Type 3274 Page 33
 - Type 3275 Page 33
- 4-Jaw**
 - Type 3774 Page 44
 - Type 3775 Page 44
 - Type 3674 Page 45
 - Type 3675 Page 45



9157

ROTATING

- Can replace typical center in machine tailstock
- Chuck not included, please select one of the matching types

Code No.	Type	W* [in]	Morse Taper	D1 [in]	D2 [in]	D3 [in]	B [in]	L1 [in]	L2 [in]	L3 [in]	L4 [in]	M	Weight [lbs]
7-573-032	9157-3"-2	3.15	2	2.20	2.64	3.07	-	4.69	2.17	1.97	0.10	M6	3.09
7-573-033	9157-3"-3	3.15	3	2.20	2.64	3.07	-	5.35	2.07	1.97	0.10	M6	3.31
7-573-043	9157-4"-3	3.94	3	2.76	3.27	3.86	-	6.18	2.99	2.80	0.10	M8	7.50
7-573-044	9157-4"-4	3.94	4	2.76	3.27	3.86	-	7.01	2.97	2.80	0.10	M8	8.38
7-573-054	9157-5"-4	4.92	4	3.74	4.25	4.84	-	7.19	3.15	2.89	0.14	M8	12.79
7-573-055	9157-5"-5	4.92	5	3.74	4.25	4.84	-	8.25	3.15	2.89	0.14	M8	7.94
7-573-064	9157-6"-4	6.30	4	4.92	5.51	6.30	4.33	7.32	3.29	3.03	0.14	M10	14.55
7-573-065	9157-6"-5	6.30	5	4.92	5.51	6.30	4.33	8.39	3.29	3.03	0.14	M10	16.53
7-573-085	9157-8"-5	7.87	5	6.30	6.93	7.87	5.12	8.39	3.29	3.03	0.14	M10	22.05
7-573-086	9157-8"-6	7.87	6	6.30	6.93	7.87	6.30	11.38	4.21	3.86	0.14	M10	40.34
7-573-105	9157-10"-5	9.84	5	7.87	8.82	9.84	5.12	8.39	3.29	3.03	0.18	M12	30.20
7-573-106	9157-10"-6	9.84	6	7.87	8.82	9.84	6.30	11.38	4.21	3.86	0.18	M12	49.60

W - Chuck diameter