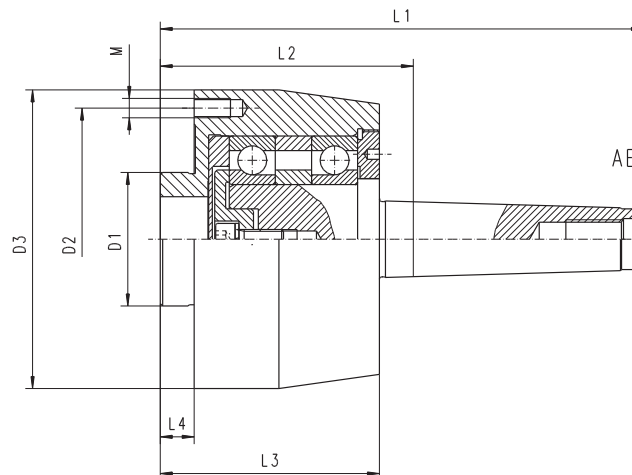


9167

ROTATING WITH FINE ADJUSTMENT

- Can replace typical center in machine tailstock
- Chuck not included, please select one of the matching types



| Code No. | Type | W* [in] | Morse Taper | D1 [in] | D2 [in] | D3 [in] | L1 [in] | L2 [in] | L3 [in] | L4 [in] | M | Weight [lbs] |
|------------|-----------|---------|-------------|---------|---------|---------|---------|---------|---------|---------|-------|--------------|
| 7-861-9400 | 9167-4"-3 | 3.94 | 3 | 1.77 | 3.27 | 3.86 | 6.50 | 3.31 | 3.11 | 0.47 | 3xM8 | 7.50 |
| 7-861-9404 | 9167-4"-4 | 3.94 | 4 | 1.77 | 3.27 | 3.86 | 7.40 | 3.37 | 3.11 | 0.47 | 3xM8 | 8.16 |
| 7-861-9500 | 9167-5"-4 | 4.92 | 4 | 2.17 | 4.25 | 4.84 | 7.85 | 3.82 | 3.56 | 0.55 | 3xM8 | 13.89 |
| 7-861-9505 | 9167-5"-5 | 4.92 | 5 | 2.17 | 4.25 | 4.84 | 8.92 | 3.82 | 3.56 | 0.55 | 3xM8 | 15.43 |
| 7-861-9600 | 9167-6"-5 | 6.30 | 5 | 3.39 | 5.51 | 6.30 | 9.06 | 3.96 | 3.70 | 0.63 | 3xM10 | 24.69 |

W - Chuck diameter

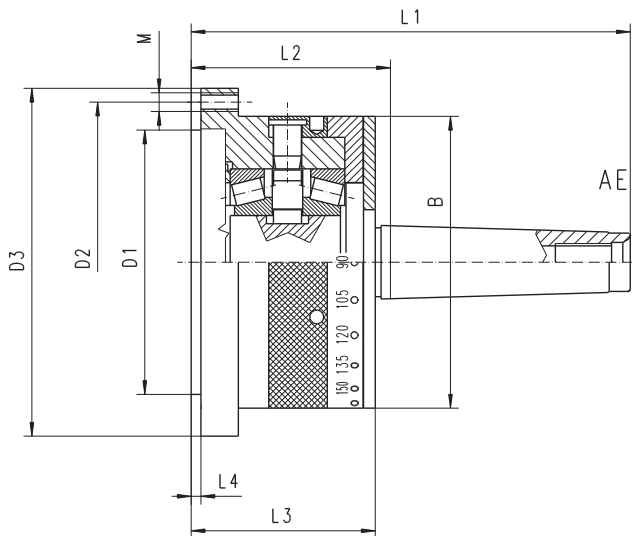
Please select an appropriate chuck

- 3-Jaw: Type 3564 Page 15
- 3-Jaw: Type 3565 Page 15
- 6-Jaw: Type 3864 Page 17
- 6-Jaw: Type 3865 Page 17

9184

ROTATING DIVIDING WITH BLOCKING

- Can replace typical center in machine tailstock
- Able to divide and block workpiece during machining
- Basic indexing: 2, 3, 4, 6, 8, 12, 24
- Chuck not included, please select one of the matching types



| Code No. | Type | W* [in] | Morse Taper | D1 [in] | D2 [in] | D3 [in] | B [in] | L1 [in] | L2 [in] | L3 [in] | L4 [in] | M | Weight [lbs] |
|-----------|-----------|---------|-------------|---------|---------|---------|--------|---------|---------|---------|---------|-------|--------------|
| 7-574-032 | 9184-3"-2 | 3.15 | 2 | 2.20 | 2.64 | 3.23 | - | 5.37 | 2.85 | 2.66 | 0.10 | 3xM6 | 5.51 |
| 7-574-033 | 9184-3"-3 | 3.15 | 3 | 2.20 | 2.64 | 3.23 | - | 6.04 | 2.85 | 2.66 | 0.10 | 3xM6 | 5.95 |
| 7-574-043 | 9184-4"-3 | 3.94 | 3 | 2.76 | 3.27 | 3.94 | - | 6.20 | 3.01 | 2.81 | 0.12 | 3xM8 | 8.38 |
| 7-574-044 | 9184-4"-4 | 3.94 | 4 | 2.76 | 3.27 | 3.94 | - | 7.11 | 3.07 | 2.81 | 0.12 | 3xM8 | 9.04 |
| 7-574-054 | 9184-5"-4 | 4.92 | 4 | 3.74 | 4.25 | 4.92 | - | 7.46 | 3.43 | 3.17 | 0.14 | 3xM8 | 13.23 |
| 7-574-055 | 9184-5"-5 | 4.92 | 5 | 3.74 | 4.25 | 4.92 | - | 8.52 | 3.43 | 3.17 | 0.14 | 3xM8 | 14.99 |
| 7-574-064 | 9184-6"-4 | 6.30 | 4 | 4.92 | 5.51 | 6.30 | 4.92 | 7.46 | 3.43 | 3.17 | 0.14 | 3xM10 | 16.76 |
| 7-574-065 | 9184-6"-5 | 6.30 | 5 | 4.92 | 5.51 | 6.30 | 4.92 | 8.52 | 3.43 | 3.17 | 0.14 | 3xM10 | 18.08 |

W - Chuck diameter

Please select an appropriate chuck

- 3-Jaw: Type 3574 Page 32
- 3-Jaw: Type 3575 Page 32
- 3-Jaw: Type 3274 Page 33
- 3-Jaw: Type 3275 Page 33
- 4-Jaw: Type 3774 Page 44
- 4-Jaw: Type 3775 Page 44
- 4-Jaw: Type 3674 Page 45
- 4-Jaw: Type 3675 Page 45



Type of mounting



Material of chuck body



Number of jaws



Type of jaws