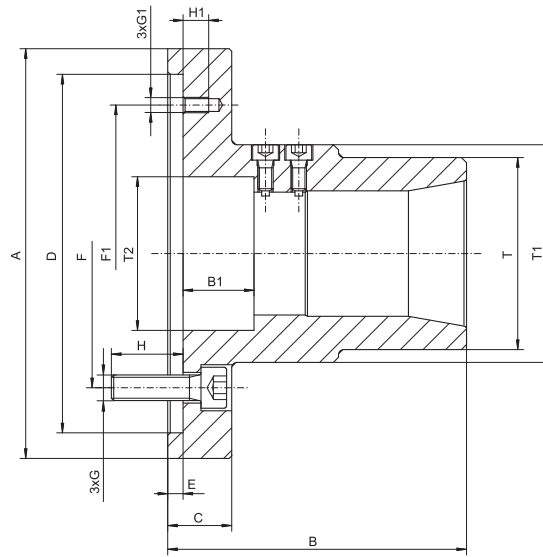


2904

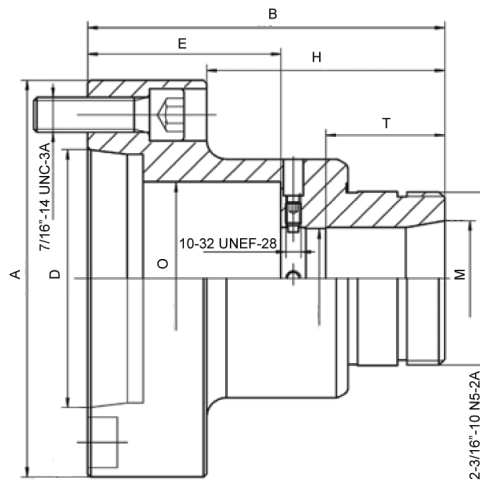
- For 5C and 16C collets
- Chucks are not equipped with collets



Code No.	Type	A	B	B1	C	D	E	F	F1	G	G1	H	H1	T	T1	T2	Clamping range			*Max. pulling force				
																	min	max	max	Y*	RPM	Match- col- let	Weight	
																	[mm]			[kN]	1-min	[lbs]		
7-775-0521	2904-150-5C	150	95	24,0	25	140	6	104,8	116	M10	M6	28	10	58	70	40	3 - 26	max. 20	max. 24	15	6,000	5C	8.82	
7-775-0631	2904-160-16C	160	116,7	27,7	25	140	6	104,8	116	M10	M6	28	10	75	85	60	2 - 42	6 - 36	6 - 29	25	6,000	16C	11.68	

2916

- For 5C collets
- Direct A2-5 Mount
- Chucks are not equipped with collets



Code No.	Type	A	B	D	E	H	M	O	T	d - Clamping range			*Max. pulling force		
										○	□	□	Y*	RPM	Weight
										[mm]			[lbf]	1/min	[lbs]
7-775-0551	2916-5"-5C	5.125	4.5	3.25	2.435	3	1.453	2.43	1.5	3 - 26	max. 20	max. 24	3,000	6,000	5.5