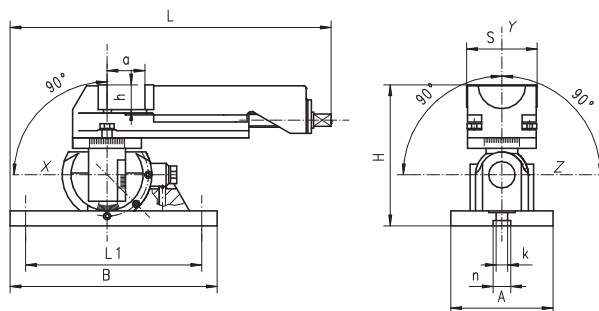
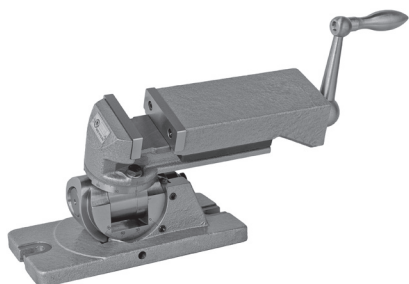


# 6534

## THREE ANGLE MULTI-PURPOSE MACHINE VISE



Code No.	Type	S	A	B	H	L	L1	a	h	k	n	Max. clamping force [daN]	Weight [lbs]
		[mm]											
7-212-008	6534-80M	80	116	235	160	321.5	199	63	25	13	20	1,000	26.9

**Features:**

- Made of high quality iron castings
- Rotation in „Y“ axis within 360°
- Can tilt in two directions within 90° around „X“ axis and tilt within 90° from vertical to horizontal position around „Z“ axis
- Accuracy in every angular position in 3 axes equal to 30'

**Application:**

- For the grinding of surfaces rotated in one or several planes from the base, spotting and drilling holes in such surfaces and for precise milling at low cutting forces

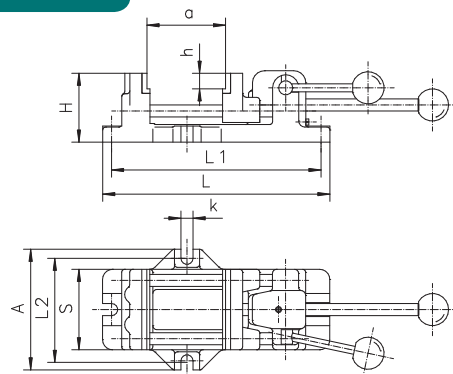
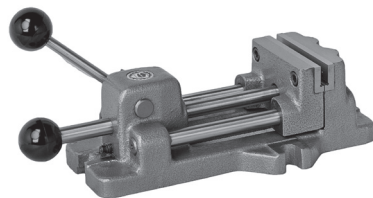
**Standard accessories:**

- Handcrank
- Clamping bolts

Accessories 270-282

# 6540

## QUICK-ACTING MACHINE VISE



Code No.	Type	S	A	H	L	L1	L2	a	h	k	Max. clamping force [daN]	Weight [lbs]
		[mm]										
7-260-003	6540-80	80	120	68	226	208	102	80	16.5	12	350	8.8
7-260-004	6540-100	100	160	85	293	257	124	125	16.5	14	400	15.4
7-260-005	6540-125	125	185	90	330	292	147	150	16.5	14	500	22.0
7-260-006	6540-160	160	224	95	380	340	184	160	16.5	18	600	34.1

**Features:**

- The initial clamping is done by the movable jaw, placed closely to the workpiece
- Final clamping of the workpiece is performed by the lever movement of the quick-acting cam-mechanism, which minimizes the required setting time
- Recessed jaw inserts for convenient leveling of workpiece
- Guiding rods and cam mechanism are hardened and ground
- Removable jaw inserts are hardened and blackened
- Body and movable jaw are high quality castings

**Application:**

- Designed for milling and drilling operations and instant setting of the workpiece

Accessories 270-282

1  
2  
3  
4  
5  
6

6534  
6540