

Features:

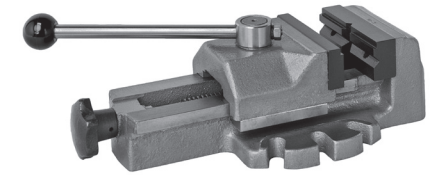
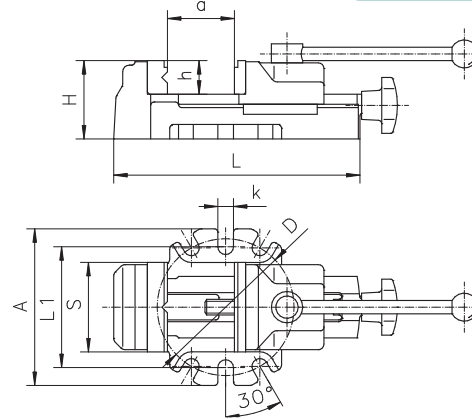
- The clamping of the workpiece is performed by a single rotary movement of the lever
- The V-block is fastened to the fixed jaw, which enables the clamping of bars
- V-block enables horizontal or vertical clamping of flat or round workpieces
- Cam mechanism is hardened and ground
- Removable jaw inserts are hardened and blackened
- Body and movable jaw are high quality castings

Application:

- Designed for milling and drilling operations, especially for series machining and instant setting of the workpiece

QUICK-ACTING MACHINE VISE

6542



Accessories 270-282

Code No.	Type	S	A	H	L	L1	D	a	h	k	Max. quick grip jaw stroke	Max. clamping force	Weight
		[mm]											
7-205-000	6542-80	80	140	70	220	108	122	80	30	14	4	800	11.4
7-205-005	6542-100	100	165	80	270	133	140	100	35	14	4	1,200	19.6

Features:

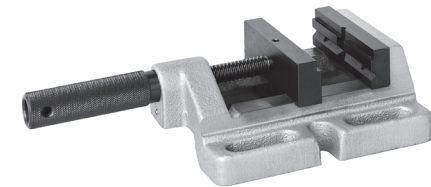
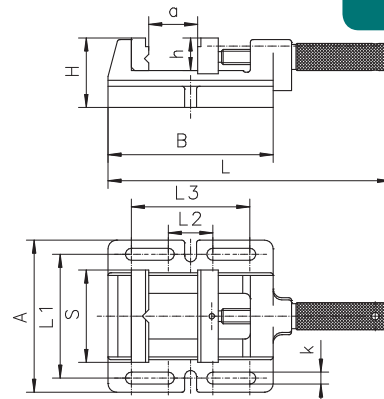
- Vertical and horizontal V-grooves on the fixed jaw insert and recesses of both jaws enable a wide variety of workpieces to be clamped
- Body is made of high quality castings

Application:

- Ideal for most drilling and light milling operations

DRILLING MACHINE VISE

6543



Accessories 270-282

Code No.	Type	S	A	B	H	L	L1	L2	L3	a	h	k	Max. clamping force	Weight
		[mm]										[daN]		
7-207-003	6543-85M	85	140	152	64	265	114	41	109	70	30	11	400	7.5
7-207-004	6543-100M	100	152	170	64	285	124	57	127	85	30	13	500	8.8
7-207-005	6543-120M	120	176	212	64	360	148	71	169	120	30	13	650	11.0
7-207-006	6543-150M	150	208	262	66	442	178	75	209	150	38	13	800	18.5