

Features:

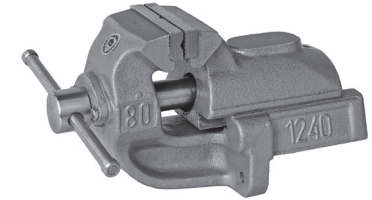
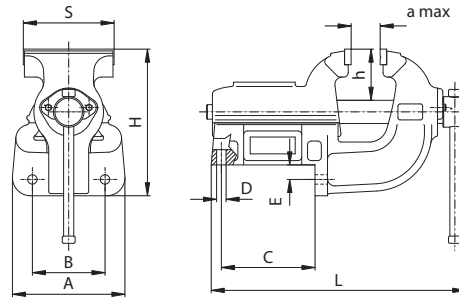
- Steel jaw inserts induction hardened and ground
- Jaw inserts with vertical and horizontal recesses for clamping round workpieces
- Lead-screw completely covered to keep dirt out
- Fixed base and movable back jaw

Application:

- This high quality, rugged vise with dovetail guides is well-suited to extra heavy work

HEAVY DUTY TABLE VISE

1240



Code No.	Type	S	A	B	C	D	E	H	L	a	h	Max. clamping force [daN]	Weight [lbs]
		[mm]											
7-235-004	1240-80L	80	115	85	87	9	16	140	250	100	51	2,000	15.0
7-235-006	1240-100L	100	115	85	87	9	16	140	250	100	51	2,400	16.3
7-235-008	1240-125L	125	155	100	129	13	20	200	354	140	71	2,800	39.6
7-235-010	1240-150L	150	180	125	187	13	20	222	437	175	79	3,600	68.2
7-235-012	1240-175L	175	180	125	187	13	20	222	437	175	79	4,000	70.4
7-235-014	1240-200L	200	214	150	232	15	26	268	585	250	90	4,300	129.8
7-235-016	1240-250L	250	214	150	232	15	26	268	585	250	90	4,500	135.3

Accessories 270-282

Features:

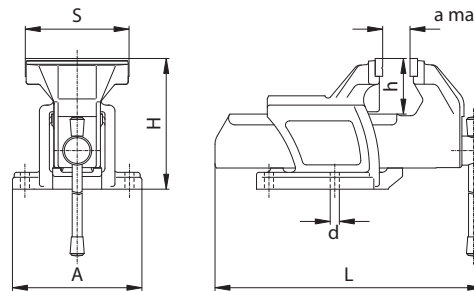
- Ruggedly constructed with body and jaws made of high quality cast iron and other parts of alloy steel
- Steel jaw inserts induction hardened and ground, file cut for good grip
- Jaw inserts with vertical and horizontal recesses for clamping round workpieces
- Lead-screw completely covered to keep dirt out

Application:

- Designed for use with milling machines, drill presses, etc.

HEAVY DUTY BENCH VISE

1250



Code No.	Type	S	A	H	L	a	d	h	Max. clamping force [daN]	Weight [lbs]
		[mm]								
7-231-005	1250-63L	63	120	112	229	63	9	45	1,200	8.8
7-231-010	1250-80L	80	137	137	280	80	11	58	1,800	14.5
7-231-015	1250-100L	100	137	137	282	80	11	58	2,200	16.5
7-231-020	1250-125L	125	156	156	323	100	11	65	2,600	23.1
7-231-025	1250-150L	150	170	182	380	125	13	75	3,400	35.6
7-231-030	1250-175L	175	190	202	434	150	13	90	3,800	50.6

Matching swivel base



Type 1282 Page 273

Accessories 270-282