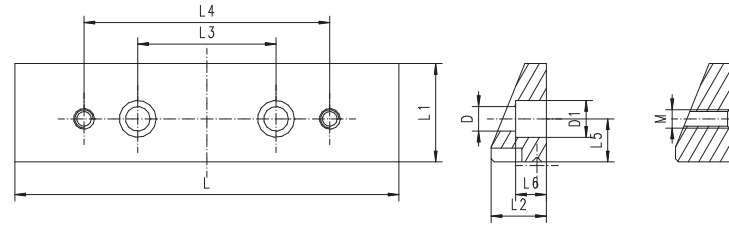


PLAIN JAW INSERT

FOR TYPE  
6620, 6622, 6623, 6624, 6820

Code No.	L	L1	L2	L3	L4	L5	L6	L7	L8	D	D1	D2	M
	[mm]												
7-223-804J	100	23	15	32	66	9.5	7.0	-	-	6.5	10	-	M5
7-223-805J	125	32	18	45	80	14.0	8.5	-	-	8.0	12	-	M6
7-223-806J	150	42	24	67	110	18.0	11.5	-	-	10.0	15	-	M8
7-223-808J	200	50	30	74	140	22.0	11.5	-	-	10.0	15	-	M8

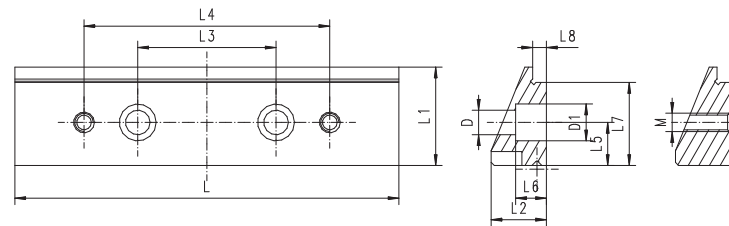


2-pc/set

JAW INSERT WITH STEP

FOR TYPE  
6620, 6622, 6623, 6624, 6820

Code No.	L	L1	L2	L3	L4	L5	L6	L7	L8	D	D1	M
	[mm]											
7-223-804S	100	23	15	32	66	9.5	8.0	19	4.0	6.5	10	M5
7-223-805S	125	32	18	45	80	14.0	10.0	27	4.5	8.0	12	M6
7-223-806S	150	42	24	67	110	18.0	13.5	37	5.0	10.0	15	M8
7-223-808S	200	50	30	74	140	22.0	15.0	40	5.0	10.0	15	M8

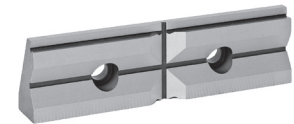
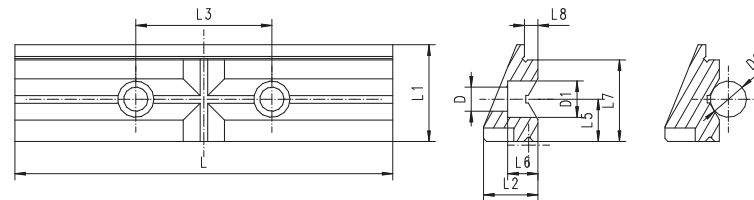


2-pc/set

PRISMATIC JAW INSERT

FOR TYPE  
6620, 6622, 6623, 6624, 6820

Code No.	L	L1	L2	L3	L4	L5	L6	L7	L8	D	D1	D2
	[mm]											
7-223-804P	100	23	15	32	-	9.5	8.0	19	4.0	6.5	10	3+20
7-223-805P	125	32	18	45	-	14.0	10.0	27	4.5	8.0	12	4+27
7-223-806P	150	42	24	67	-	18.0	13.5	37	5.0	10.0	15	6+41
7-223-808P	200	50	30	74	-	22.0	15.0	40	5.0	10.0	15	7+48

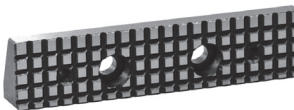
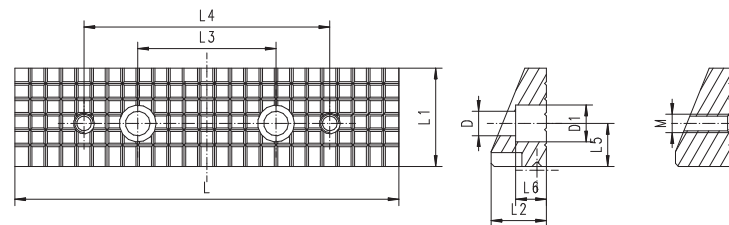


2-pc/set

GROOVED JAW INSERT

FOR TYPE  
6620, 6622, 6623, 6624, 6820

Code No.	L	L1	L2	L3	L4	L5	L6	D	D1	M
	[mm]									
7-223-804G	100	23	15	32	66	9.5	8.0	6.5	10	M5
7-223-805G	125	32	18	45	80	14.0	10.0	8.0	12	M6
7-223-806G	150	42	24	67	110	18.0	13.5	10.0	15	M8
7-223-808G	200	50	30	74	140	22.0	15.0	10.0	15	M8



2-pc/set