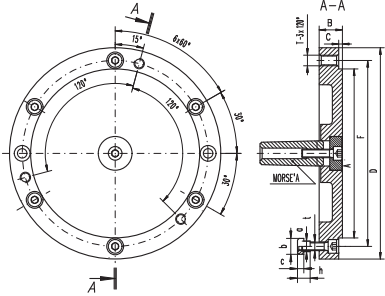




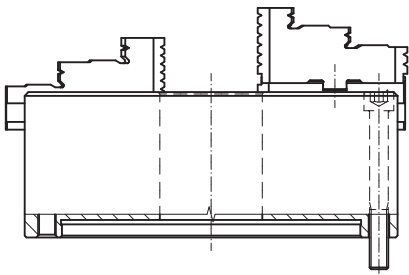
8293

■ Designed for use with rotary tables with 4 and 6 T-slots

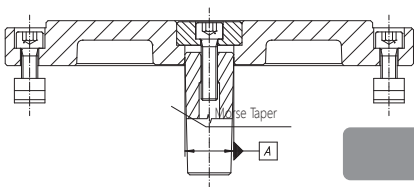


| Code No. | F | A | B | C | MT | T | a | b | c | h | t | For rotary table | Chuck Size (D) |
|-----------|------|-----|----|-----|----|-----|----|----|----|----|-------|------------------|------------------------|
| | [mm] | | | | | | | | | | | | 3274, 3574, 3275, 3575 |
| 7-872-306 | 140 | 125 | 20 | 3.5 | 3 | M10 | 10 | 15 | 6 | 12 | 4xM8 | 5859-160 | 160 |
| 7-872-308 | 176 | 160 | 22 | 3.5 | 3 | M10 | 10 | 15 | 6 | 12 | 4xM8 | 5859-200 | 200 |
| 7-872-310 | 224 | 200 | 25 | 4.5 | 3 | M12 | 12 | 18 | 7 | 14 | 4xM10 | 5859-250 | 250 |
| 7-872-312 | 286 | 260 | 30 | 4.5 | 3 | M16 | 12 | 18 | 7 | 14 | 4xM10 | 5859-320 | 315 |
| 7-872-316 | 362 | 330 | 32 | 4.5 | 4 | M16 | 14 | 22 | 8 | 16 | 6xM12 | 5859-400 | 400 |
| 7-872-320 | 458 | 420 | 35 | 4.5 | 5 | M16 | 18 | 28 | 10 | 20 | 6xM16 | 5859-500 | 500 |

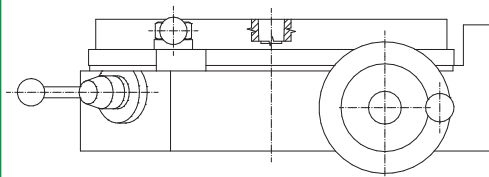
USE OF ADAPTER TYPE 8293



Self-centering lathe chucks
3274, 3275, 3574, 3575



Adapter 8293

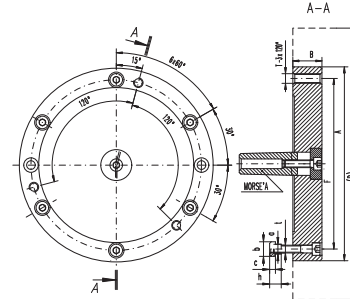


Rotary table 5859



8298

■ Designed for use with rotary tables with 4 and 6 T-slots

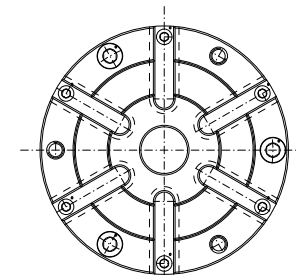
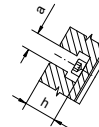
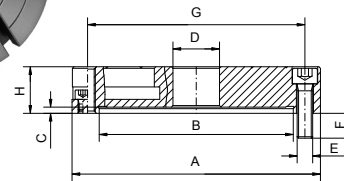


| Code No. | F | A | B | B ₁ | MT | T | a | b | c | h | t | For rotary table | Chuck Size (D) |
|-----------|-------|--------|------|----------------|----|-----|----|----|----|----|-----|------------------|------------------------|
| | [mm] | | | | | | | | | | | | 3564, 3864, 3565, 3865 |
| 7-872-606 | 140.0 | 86.00 | 33.5 | 16 | 3 | M10 | 10 | 15 | 6 | 12 | M8 | 5859-160 | 160 |
| 7-872-608 | 176.0 | 110.00 | 36.5 | 17 | 3 | M10 | 10 | 15 | 6 | 12 | M8 | 5859-200 | 200 |
| 7-872-610 | 224.0 | 145.00 | 39.5 | 19 | 3 | M12 | 12 | 18 | 7 | 14 | M10 | 5859-250 | 250 |
| 7-872-612 | 286.0 | 180.00 | 44.5 | 19 | 3 | M16 | 12 | 18 | 7 | 14 | M10 | 5859-320 | 315 |
| 7-872-616 | 171.4 | 298.45 | 30.0 | - | 4 | M16 | 14 | 22 | 8 | 16 | M12 | 5859-400 | 400 |
| 7-872-620 | 235.0 | 407.00 | 35.0 | - | 5 | M20 | 18 | 28 | 10 | 20 | M16 | 5859-500 | 500 |



9440

■ Made of high-quality cast iron
■ Face plates 9440 can be used with indexing fixtures 5901, 5902, 5911, 5912



| Code No. | A | B | C | D | E | F | G | H | a | h | For indexing fixtures | Weight |
|-----------|------|-----|---|----|--------|------|-----|----|----|----|-----------------------|--------|
| | [mm] | | | | | | | | | | | [mm] |
| 7-610-506 | 160 | 125 | 4 | 30 | M10x35 | 16.0 | 140 | 30 | 12 | 21 | 125 | 7.5 |
| 7-610-508 | 200 | 160 | 5 | 40 | M10x40 | 16.0 | 176 | 35 | 14 | 24 | 160 | 11.9 |
| 7-610-510 | 250 | 200 | 5 | 50 | M12x60 | 23.0 | 224 | 50 | 18 | 31 | 200 | 27.4 |
| 7-610-512 | 315 | 260 | 5 | 50 | M16x60 | 27.5 | 286 | 50 | 18 | 31 | 250 | 38.8 |