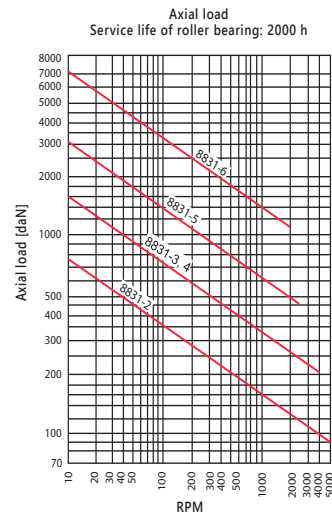
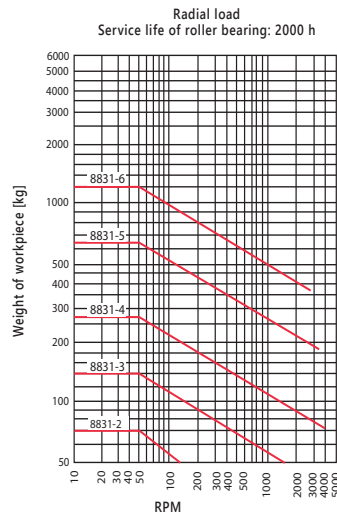
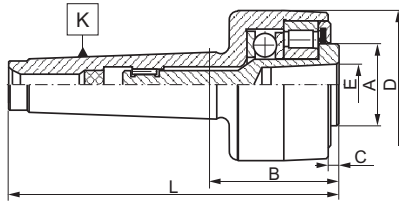


- TRIPLE BEARING DESIGN
- COMPATIBLE WITH INSERTS FROM KIT ON PAGES 11, 12

8831

- Revolving centers with interchangeable inserts - body only

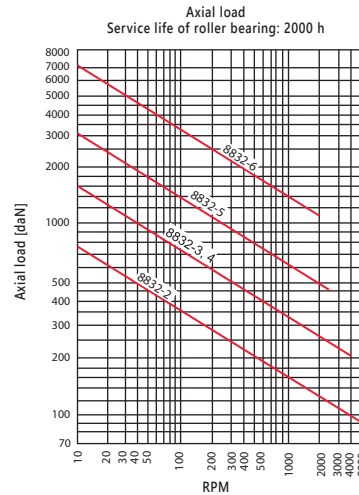
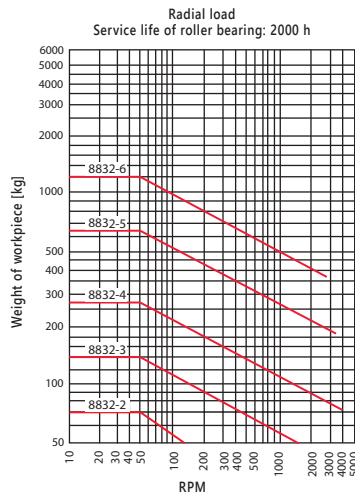
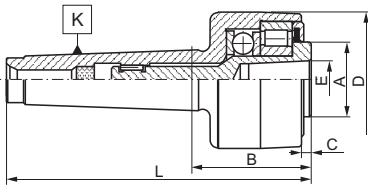


* Using heavy duty centers with lighter workpieces and/or lower axial load than specified might result in higher runout

K MT	Max. concentr. error	Code No.	Max. concentr. error	Code No.	A [in]	B [in]	C [in]	D [in]	L [in]	E [in]
	[in] Precision		[in] Standard							
2	0.0004	7-571-102	0.0008	7-571-1020	0.71	1.54	0.16	1.57	4.06	0.28
3	0.0004	7-571-103	0.0008	7-571-1030	0.98	2.05	0.18	2.20	5.24	0.47
4	0.0004	7-571-104	0.0008	7-571-1040	1.26	2.24	0.22	2.52	6.26	0.59
5	0.0006	7-571-105	0.0012	7-571-1050	1.57	2.76	0.24	3.35	7.83	0.87
6	0.0006	7-571-106	0.0012	7-571-1060	2.46	3.70	0.26	5.12	10.87	1.10

8832

- Revolving centers with interchangeable inserts - body only



K MT	Max. concentr. error	Code No.	Max. concentr. error	Code No.	A [in]	B [in]	C [in]	D [in]	L [in]	E [in]
	[in] Precision		[in] Standard							
2	0.0004	7-570-102	0.0008	7-570-1020	0.87	1.61	0.12	1.77	4.13	0.39
3	0.0004	7-570-103	0.0008	7-570-1030	0.98	2.05	0.18	2.20	5.24	0.59
4	0.0004	7-570-104	0.0008	7-570-1040	1.26	2.24	0.22	2.52	6.26	0.79
5	0.0006	7-570-105	0.0012	7-570-1050	1.57	2.76	0.24	3.35	7.83	0.98
6	0.0006	7-570-106	0.0012	7-570-1060	2.46	3.70	0.26	5.12	10.87	1.18