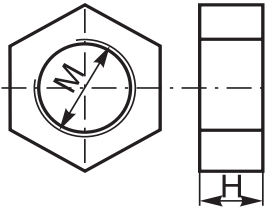


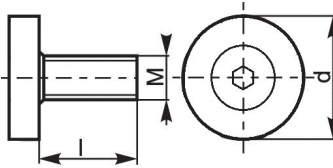
- 1
- 2
- 3
- 4
- 5

DRAW OFF NUT



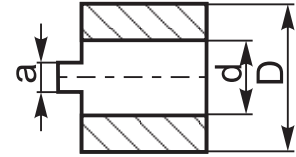
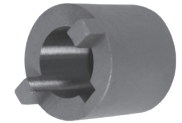
Code No.	Type	M [mm]	L [in]
7-545-900	S-0772/0	M12 x 1.5	0.413
7-545-901	S-0774/0	M16 x 1.5	0.472
7-545-902	S-0776/0	M22 x 1.5	0.610
7-545-903	S-0778/0	M27 x 1.5	0.689
7-545-904	S-0780/0	M36 x 1.5	0.827
7-545-905	S-0782/0	M48 x 1.5	0.906
7-545-906	S-0784/0	M68 x 1.5	1.004

CUTTER RETAINING SCREW



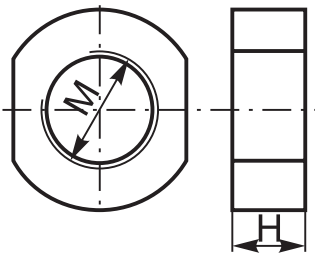
Code No.	Type	M [in]	L [in]	d [in]
7-080-005	9873-1/2"	1/4-28	0.500	0.626
7-080-010	9873-3/4"	3/8-24	0.626	0.874
7-080-015	9873-1"	1/2-20	0.811	1.189
7-080-020	9873-1.1/4"	5/8-18	0.931	1.500
7-080-025	9873-1.1/2"	3/4-16	1.126	1.874
7-080-030	9873-2"	1-14	2.500	1.375
7-080-035	9873-2.1/2"	1-14	2.500	1.375

DRIVING RING FOR S310 REAMERS



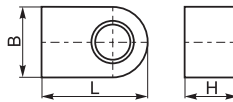
Code No.	Type	a [in]	d [in]	D [in]
7-068-904	U-0630/0	9/64	3/8	0.71
7-068-905	U-0631/0	11/64	1/2	0.79
7-068-906	U-0632/0	11/64	5/8	1.02
7-068-907	U-0633/0	15/64	3/4	1.26
7-068-908	U-0634/0	15/64	1	1.62
7-068-909	U-0635/0	19/64	1-1/4	2.00
7-068-910	U-0636/0	19/64	1-1/2	2.52
7-068-911	U-0637/0	25/64	1-3/4	3.00
7-068-912	U-0638/0	31/64	2	3.50

DRAW OFF NUT FOR S310 REAMERS



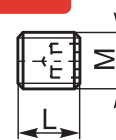
Code No.	Type	M [mm]	H [in]	Wrench size
7-068-954	U-0639/0	M12x1.0	0.24	19/32
7-068-955	U-0640/0	M16x1.5	0.28	25/32
7-068-956	U-0641/0	M20x1.5	0.32	7/8
7-068-957	U-0642/0	M22x1.5	0.36	1-1/16
7-068-958	U-0643/0	M30x2.0	0.47	1-7/16
7-068-959	U-0644/0	M36x3.0	0.55	1-13/16
7-068-960	U-0645/0	M45x3.0	0.63	2-3/16
7-068-961	U-0646/0	M52x3.0	0.63	2-9/16
7-068-962	U-0647/0	M60x4.0	0.71	3-1/8

DRIVE TANG



Code No.	Type	B [in]	H [in]	L [in]
7-080-105	U-7904/0	0.25	0.25	0.36
7-080-110	U-7903/0	0.31	0.27	0.40
7-080-115	U-2749/0	0.37	0.33	0.44
7-080-120	U-2750/0	0.50	0.39	0.56
7-080-125	U-2751/0	0.62	0.52	1.03
7-080-130	U-7902/0	0.75	0.68	1.34
7-080-135	U-7901/0	0.75	0.68	1.18
7-080-210	W-0225/0	0.31	0.31	0.61
7-080-215	W-0227/0	0.37	0.31	0.80
7-080-220	W-0229/0	0.50	0.34	0.94
7-080-225	W-0231/0	0.62	0.41	1.08
7-080-305	S-2111/0	0.47	0.35	0.94
7-080-310	S-2114/0	0.55	0.47	1.10
7-080-315	S-2117/0	0.31	0.28	0.67
7-080-320	S-2121/0	0.39	0.31	0.81
7-080-325	S-2124/0	0.63	0.47	1.26
7-080-330	U-5974/0	0.71	0.63	1.30
7-080-335	W-3649/0	0.55	0.47	0.90

HEX SOCKET SCREW



Code No.	M [in]	L [in]
7-195-081	8-32	5/16
7-195-091	10-32	5/16
7-195-110	1/4-28	1/4
7-195-120	5/16-24	1/4
7-195-208	3/8-24	5/16
7-195-210	3/8-24	25/64
7-195-301	7/16-20	15/32
7-195-314	7/16-20	25/64
7-195-412	9/16-18	15/32
7-195-513	5/8-18	1/2
7-195-517	5/8-18	19/32
7-195-610	3/4-16	23/64
7-195-615	3/4-16	19/32
7-195-618	3/4-16	45/64
7-195-620	3/4-16	25/32
7-195-622	1-14	15/16
7-195-820	1-14	53/64
7-195-824	1-14	15/16