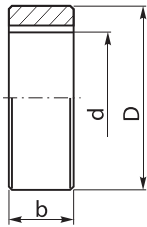




7285

■ Spacer rings for milling arbors



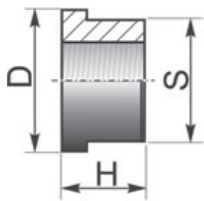
Code No.	Width of Spacer b [in]	d [in]	D [in]	Width of keyway [in]
7-020-005	0.0625	0.875	1.375	0.125
7-020-015	0.1250	0.875	1.375	0.125
7-020-025	0.2500	0.875	1.375	0.125
7-020-035	0.3750	0.875	1.375	0.125
7-020-045	0.5000	0.875	1.375	0.125
7-020-050	0.6250	0.875	1.375	0.125
7-020-055	0.7500	0.875	1.375	0.125
7-020-065	1.0000	0.875	1.375	0.125
7-020-075	1.2000	0.875	1.375	0.125
7-020-080	2.0000	0.875	1.375	0.125
7-020-090	0.0625	1.000	1.500	0.250
7-020-095	0.0938	1.000	1.500	0.250
7-020-100	0.1250	1.000	1.500	0.250

Code No.	Width of Spacer b [in]	d [in]	D [in]	Width of keyway [in]
7-020-105	0.1875	1.000	1.500	0.250
7-020-110	0.2500	1.000	1.500	0.250
7-020-115	0.3125	1.000	1.500	0.250
7-020-120	0.3750	1.000	1.500	0.250
7-020-125	0.4375	1.000	1.500	0.250
7-020-130	0.5000	1.000	1.500	0.250
7-020-135	0.6250	1.000	1.500	0.250
7-020-140	0.7500	1.000	1.500	0.250
7-020-150	1.0000	1.000	1.500	0.250
7-020-155	1.2500	1.000	1.500	0.250
7-020-160	1.5000	1.000	1.500	0.250
7-020-165	2.0000	1.000	1.500	0.250
7-020-170	3.0000	1.000	1.500	0.250
7-020-175	0.0625	1.250	1.750	0.313
7-020-185	0.1250	1.250	1.750	0.313
7-020-190	0.1875	1.250	1.750	0.313
7-020-195	0.2500	1.250	1.750	0.313
7-020-200	0.3125	1.250	1.750	0.313
7-020-205	0.3750	1.250	1.750	0.313
7-020-215	0.5000	1.250	1.750	0.313
7-020-220	0.6250	1.250	1.750	0.313
7-020-225	0.7500	1.250	1.750	0.313
7-020-230	0.8750	1.250	1.750	0.313
7-020-235	1.0000	1.250	1.750	0.313
7-020-240	1.2500	1.250	1.750	0.313

Code No.	Width of Spacer b [in]	d [in]	D [in]	Width of keyway [in]
7-020-245	1.5000	1.250	1.750	0.313
7-020-250	2.0000	1.250	1.750	0.313
7-020-255	3.0000	1.250	1.750	0.313
7-020-260	0.0625	1.500	2.125	0.375
7-020-265	0.0938	1.500	2.125	0.375
7-020-270	0.1250	1.500	2.125	0.375
7-020-275	0.1875	1.500	2.125	0.375
7-020-280	0.2500	1.500	2.125	0.375
7-020-285	0.3125	1.500	2.125	0.375
7-020-290	0.3750	1.500	2.125	0.375
7-020-300	0.5000	1.500	2.125	0.375
7-020-310	0.7500	1.500	2.125	0.375
7-020-320	1.0000	1.500	2.125	0.375
7-020-325	1.2500	1.500	2.125	0.375
7-020-335	2.0000	1.500	2.125	0.375
7-020-340	3.0000	1.500	2.125	0.375
7-020-395	0.1250	2.000	2.750	0.500
7-020-400	0.1875	2.000	2.750	0.500
7-020-405	0.2500	2.000	2.750	0.500
7-020-415	0.3750	2.000	2.750	0.500
7-020-425	0.5000	2.000	2.750	0.500
7-020-435	0.7500	2.000	2.750	0.500
7-020-445	1.0000	2.000	2.750	0.500
7-020-460	2.0000	2.000	2.750	0.500
7-020-465	3.0000	2.000	2.750	0.500



RIGHT HAND NUTS FOR MILLING ARBORS

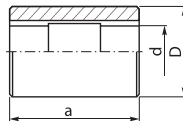


Code No.	Arbor Dia [in]	Thread Size RH	Height H [in]	Flat S [in]	OD D [in]
7-030-005R	0.875	7/8-14	0.75	1.125	1.38
7-030-010R	1.000	1-14	0.88	1.250	1.62
7-030-015R	1.250	1-1/4-12	0.88	1.250	1.62
7-030-020R	1.500	1-1/2-12	1.31	1.813	2.10
7-030-025R	2.000	2-12	1.75	2.375	2.72



7275

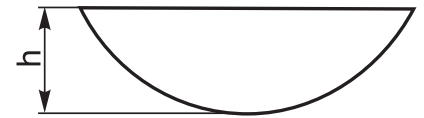
■ Cylindrical bushings for milling arbors



Code No.	D [in]	d [in]	a [in]	Width of keyway
7-025-005	1.625	0.875	2.625	0.125
7-025-010	1.625	1.000	2.625	0.250
7-025-015	1.875	1.250	2.625	0.313
7-025-020	1.875	0.875	3.125	0.125
7-025-025	1.875	1.000	3.125	0.250
7-025-030	1.875	1.250	3.125	0.313
7-025-035	2.125	0.875	3.750	0.125
7-025-040	2.125	1.000	3.750	0.250
7-025-045	2.125	1.250	3.750	0.313
7-025-050	2.125	1.500	3.750	0.375
7-025-055	2.750	0.875	4.250	0.125
7-025-060	2.750	1.000	4.250	0.250
7-025-065	2.750	1.250	4.250	0.313
7-025-070	2.750	1.500	4.250	0.375
7-025-075	2.750	2.000	4.250	0.500



DRIVE KEY C



Code No.	Type	b [mm]	h [mm]
7-068-804	U-0097/0	3	3.7
7-068-806	U-0648/0	4	4.0
7-068-807	U-0098/0	5	6.5
7-068-809	U-0649/0	8	11.0
7-068-810	U-0650/0	10	16.0
7-068-811	U-0106/0	12	19.0