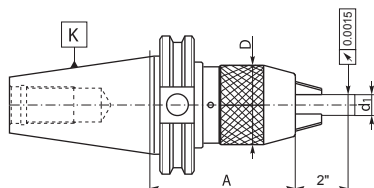


1
2
3
4
5
6

7658

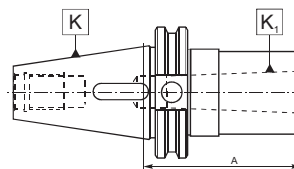
■ Keyless drill chucks with integral CAT flange



Code No.	K 7:24	d ₁ [mm]	d ₁ [in]	A [in]	D [in]
7-187-433	CAT40	1-13	0.0313 - 0.5000	4.13	2.00
7-187-435	CAT40	3-16	0.1250 - 0.6250	5.12	2.25
7-187-563	CAT50	1-13	0.0313 - 0.5000	4.13	2.00
7-187-565	CAT50	3-16	0.1250 - 0.6250	4.33	2.25

1691

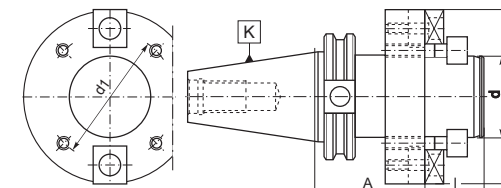
■ Reducing adapters for tools with MT shank



Code No.	K 7:24	K ₁ MT	A [in]
7-183-401	CAT40	1	1.500
7-183-402	CAT40	2	2.000
7-183-403	CAT40	3	3.000
7-183-404	CAT40	4	3.500
7-183-501	CAT50	1	1.500
7-183-502	CAT50	2	2.000
7-183-503	CAT50	3	2.500
7-183-504	CAT50	4	3.375
7-183-505	CAT50	5	4.000
7-183-504	CAT50	4	3.375
7-183-505	CAT50	5	4.000

7382

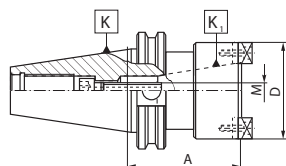
■ Face mill holders for milling cutters



Code No.	K 7:24	d [in]	A [in]	d ₁ [in]	d ₂ [in]	l [in]	Image	Image
7-182-502	CAT50	2.00	2.40	4.00	4.85	0.398	7-182-802	7-182-902
7-182-504	CAT50	2.00	4.00	4.00	4.85	0.398	7-182-802	7-182-902
7-182-506	CAT50	2.00	6.00	4.00	4.85	0.398	7-182-802	7-182-902
7-182-512	CAT50	2.50	2.40	4.00	5.00	1.125	7-182-804	7-182-904
7-182-514	CAT50	2.50	4.00	4.00	5.00	1.125	7-182-804	7-182-904
7-182-516	CAT50	2.50	6.00	4.00	5.00	1.125	7-182-804	7-182-904

1690

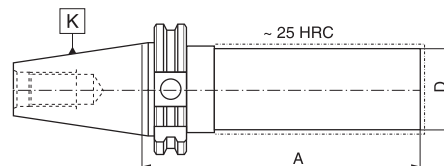
■ Reducing adapters for tools with 7:24 shank



Code No.	K 7:24	K ₁ 7:24	A [in]	D [in]	M [in]	Image	Image
7-184-504	CAT50	CAT40	3.15	3.46	5/8"-11	7-184-802	7-184-902

2191

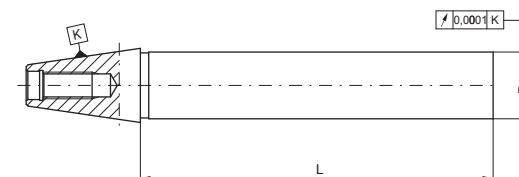
■ Machinable blank adapters



Code No.	K 7:24	D [mm]	A [mm]
7-184-102	CAT40	40	280
7-184-104	CAT40	63	280
7-184-106	CAT50	50	330
7-184-108	CAT50	80	330

2852

■ Control arbor



Code No.	K 7:24	D [mm]	L [mm]
7-184-202	CAT40	40	300
7-184-204	CAT50	50	300