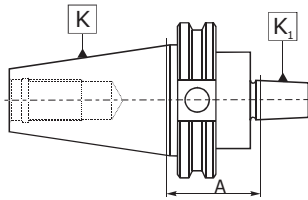


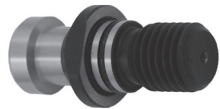


**5357**

■ ANSI B5.50/CAT drill chuck adapters for Jacobs taper

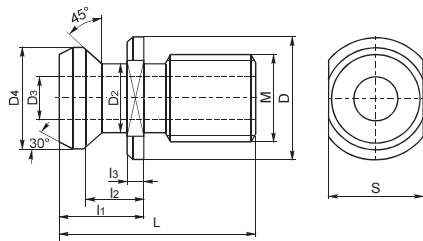


Code No.	K 7:24	K <sub>1</sub> Jacobs	A [in]
7-181-401	CAT40	J1	1.50
7-181-402	CAT40	J2	1.50
7-181-433	CAT40	J33	1.50
7-181-403	CAT40	J3	1.50
7-181-404	CAT40	J4	1.50
7-181-405	CAT40	J5	1.50
7-181-406	CAT40	J6	1.50
7-181-502	CAT50	J2	1.50
7-181-533	CAT50	J33	1.50
7-181-503	CAT50	J3	1.50
7-181-504	CAT50	J4	1.50
7-181-505	CAT50	J5	1.50
7-181-506	CAT50	J6	1.50



**9886**

■ Pull studs with through hole



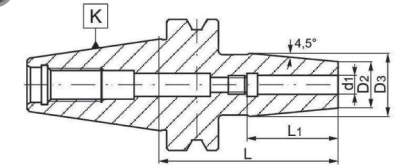
Code No.	Size	M	D [in]	D2 [in]	D3 [in]	D4 [in]	L [in]	l1 [in]	l2 [in]	l3 [in]	S [in]
7-189-905	CAT40	5/8-11UNC	0.898	0.492	0.280	0.744	1.496	0.640	0.437	0.118	0.748
7-189-950	CAT50	1-8	1.400	0.823	0.500	1.146	2.244	1.000	0.700	0.197	1.185
7-189-941	HAAS 40	5/8-11UNC	1.280	0.394	0.118	0.591	2.299	1.260	0.984	0.236	0.748

Code No.	K 7:24	d <sub>1</sub> [mm]	L [mm]	L <sub>1</sub> [mm]	D <sub>2</sub> [mm]	D <sub>3</sub> [mm]
7-018-402	CAT40	3	80	36	14	22
7-018-404	CAT40	3	120	36	14	22
7-018-406	CAT40	3	160	36	14	22
7-018-408	CAT40	4	80	36	14	22
7-018-410	CAT40	4	120	36	14	22
7-018-412	CAT40	4	160	36	15	22
7-018-414	CAT40	5	80	36	16	22
7-018-416	CAT40	5	120	36	16	22
7-018-418	CAT40	5	160	36	16	22
7-018-420	CAT40	6	80	36	21	27
7-018-422	CAT40	6	120	36	21	27
7-018-424	CAT40	6	160	36	21	27
7-018-426	CAT40	8	80	36	21	27
7-018-428	CAT40	8	120	36	21	27
7-018-430	CAT40	8	160	36	21	27
7-018-432	CAT40	10	80	42	24	32
7-018-434	CAT40	10	120	42	24	32
7-018-436	CAT40	10	160	42	24	32
7-018-438	CAT40	12	80	47	24	32
7-018-440	CAT40	12	120	47	24	32
7-018-442	CAT40	12	160	47	24	32
7-018-444	CAT40	14	80	47	27	34
7-018-446	CAT40	14	120	47	27	34
7-018-448	CAT40	14	160	47	27	34
7-018-450	CAT40	16	80	50	27	34
7-018-452	CAT40	16	120	50	27	34
7-018-454	CAT40	16	160	50	27	34
7-018-456	CAT40	18	80	50	33	42
7-018-458	CAT40	18	120	50	33	42
7-018-460	CAT40	18	160	50	33	42
7-018-462	CAT40	20	80	52	33	42
7-018-464	CAT40	20	120	52	33	42
7-018-466	CAT40	20	160	52	33	42
7-018-468	CAT40	25	100	58	44	53
7-018-470	CAT40	25	120	58	44	53
7-018-472	CAT40	25	160	58	44	53
7-018-474	CAT40	32	100	58	44	53
7-018-476	CAT40	32	120	58	44	53
7-018-478	CAT40	32	160	58	44	53



**7630**

■ Shrink fit holders



\* Suitable for HSS and solid carbide tools with cylindrical shank (h6 tolerance)

Code No.	K 7:24	d <sub>1</sub> [mm]	L [mm]	L <sub>1</sub> [mm]	D <sub>2</sub> [mm]	D <sub>3</sub> [mm]
7-018-502	CAT50	6	80	36	21	27
7-018-504	CAT50	6	120	36	21	27
7-018-506	CAT50	6	160	36	21	27
7-018-508	CAT50	8	80	36	21	27
7-018-510	CAT50	8	120	36	21	27
7-018-512	CAT50	8	160	36	21	27
7-018-514	CAT50	10	80	42	24	32
7-018-516	CAT50	10	120	42	24	32
7-018-518	CAT50	10	160	42	24	32
7-018-520	CAT50	12	80	47	24	32
7-018-522	CAT50	12	120	47	24	32
7-018-524	CAT50	12	160	47	24	32
7-018-526	CAT50	14	80	47	27	34
7-018-528	CAT50	14	120	47	27	34
7-018-530	CAT50	14	160	47	27	34
7-018-532	CAT50	16	80	50	27	34
7-018-534	CAT50	16	120	50	27	34
7-018-536	CAT50	16	160	50	27	34
7-018-538	CAT50	18	80	50	33	42
7-018-540	CAT50	18	120	50	33	42
7-018-542	CAT50	18	160	50	33	42
7-018-544	CAT50	20	80	52	33	42
7-018-546	CAT50	20	120	52	33	42
7-018-548	CAT50	20	160	52	33	42
7-018-550	CAT50	25	100	58	44	53
7-018-552	CAT50	25	120	58	44	53
7-018-554	CAT50	25	160	58	44	53
7-018-556	CAT50	32	100	58	44	53
7-018-558	CAT50	32	120	58	44	53
7-018-560	CAT50	32	160	58	44	53