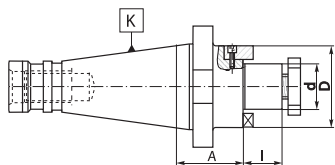


### 7311 QC

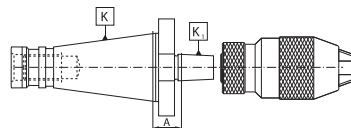
- Shell mill holders
- Compatible with Ericson Quick Change



| Code No.   | K<br>7:24 | d<br>[in] | A+I<br>[in] |           |           |
|------------|-----------|-----------|-------------|-----------|-----------|
| 7-060-005Q | NMTB 30   | 0.50      | 0.689       | 7-080-005 | 7-080-105 |
| 7-060-010Q | NMTB 30   | 0.75      | 0.689       | 7-080-010 | 7-080-110 |
| 7-060-015Q | NMTB 30   | 1.00      | 0.929       | 7-080-015 | 7-080-115 |
| 7-060-020Q | NMTB 30   | 1.25      | 0.929       | 7-080-020 | 7-080-120 |
| 7-060-030Q | NMTB 40   | 0.75      | 0.689       | 7-080-010 | 7-080-110 |
| 7-060-035Q | NMTB 40   | 1.00      | 0.937       | 7-080-015 | 7-080-115 |
| 7-060-040Q | NMTB 40   | 1.25      | 0.937       | 7-080-020 | 7-080-120 |
| 7-060-045Q | NMTB 40   | 1.50      | 0.937       | 7-080-025 | 7-080-125 |
| 7-060-050Q | NMTB 40   | 2.00      | 0.937       | 7-080-030 | 7-080-130 |
| 7-060-060Q | NMTB 50   | 0.75      | 0.752       | 7-080-010 | 7-080-110 |
| 7-060-065Q | NMTB 50   | 1.00      | 1.000       | 7-080-015 | 7-080-115 |
| 7-060-070Q | NMTB 50   | 1.25      | 1.000       | 7-080-020 | 7-080-120 |
| 7-060-075Q | NMTB 50   | 1.50      | 1.000       | 7-080-025 | 7-080-125 |
| 7-060-080Q | NMTB 50   | 2.00      | 1.000       | 7-080-030 | 7-080-130 |

### 5370

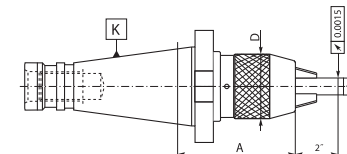
- Jacobs Taper adapters
- Compatible with Ericson Quick Change



| Code No.    | K<br>7:24 | Jacobs Taper | A<br>[in] |
|-------------|-----------|--------------|-----------|
| 7-052-033Q  | MNTB 30   | JT3          | 0.47      |
| 7-052-0333Q | MNTB 30   | JT33         | 0.47      |
| 7-052-036Q  | MNTB 30   | JT6          | 0.47      |
| 7-052-041Q  | MNTB 40   | JT1          | 0.55      |
| 7-052-042Q  | MNTB 40   | JT2          | 0.55      |
| 7-052-043Q  | MNTB 40   | JT3          | 0.55      |
| 7-052-0433Q | MNTB 40   | JT33         | 0.55      |
| 7-052-046Q  | MNTB 40   | JT6          | 0.55      |
| 7-052-053Q  | MNTB 50   | JT3          | 0.71      |
| 7-052-054Q  | MNTB 50   | JT4          | 0.71      |
| 7-052-055Q  | MNTB 50   | JT5          | 0.71      |

### 7657

- Keyless drill chucks
- Compatible with Ericson Quick Change



| Code No.   | K<br>7:24 | d <sub>1</sub><br>[in] | A<br>[in] | D<br>[in] | Wrench     |
|------------|-----------|------------------------|-----------|-----------|------------|
| 7-048-420Q | NMTB 40   | 0.031 - 0.500          | 3.46      | 2.00      | 7-188-932K |
| 7-048-430Q | NMTB 40   | 0.125 - 0.625          | 3.90      | 2.25      | 7-188-932K |

### 7349

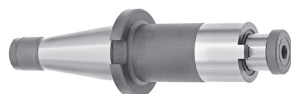
- Face mill holders for milling cutters
- Holders have 1" drive keys
- For 8" and larger face mill cutters



| Code No.  | K<br>7:24 | Arbor Dia<br>[in] | Arbor Length<br>[in] | Mounting Bolts<br>Circle Dia [in] | Mounting Bolts<br>Thread [in] |
|-----------|-----------|-------------------|----------------------|-----------------------------------|-------------------------------|
| 7-170-005 | NMTB 40   | 2.00              | 6.20                 | 4.00                              | 5/8-11                        |
| 7-170-020 | NMTB 40   | 2.50              | 6.20                 | 4.00                              | 5/8-11                        |
| 7-170-010 | NMTB 50   | 2.00              | 7.56                 | 4.00                              | 5/8-11                        |
| 7-170-025 | NMTB 50   | 2.50              | 7.56                 | 4.00                              | 5/8-11                        |
| 7-170-030 | NMTB 60   | 2.50              | 10.70                | 4.00                              | 5/8-11                        |

### 7311 QC L

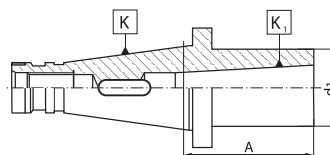
- Shell mill holders with 4" extension
- Compatible with Ericson Quick Change



| Code No.   | K<br>7:24 | Arbor Dia<br>[in] | Gage Length<br>[in] |           |           |
|------------|-----------|-------------------|---------------------|-----------|-----------|
| 7-075-002Q | NMTB 40   | 0.75              | 4.00                | 7-080-010 | 7-080-110 |
| 7-075-005Q | NMTB 40   | 1.00              | 4.00                | 7-080-015 | 7-080-115 |
| 7-075-010Q | NMTB 50   | 1.00              | 4.00                | 7-080-015 | 7-080-115 |
| 7-075-015Q | NMTB 50   | 1.25              | 4.00                | 7-080-020 | 7-080-120 |
| 7-075-020Q | NMTB 50   | 1.50              | 4.00                | 7-080-025 | 7-080-125 |

### 1657 QC

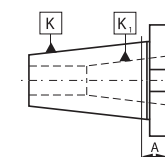
- Morse taper adapters for tools with tang
- Compatible with Ericson Quick Change



| Code No.   | K<br>7:24 | K <sub>1</sub> MT | A<br>[in] | d <sub>1</sub><br>[in] |
|------------|-----------|-------------------|-----------|------------------------|
| 7-100-005Q | NMTB 40   | 2                 | 1.969     | 1.260                  |
| 7-100-010Q | NMTB 40   | 3                 | 2.559     | 1.575                  |
| 7-100-015Q | NMTB 40   | 4                 | 3.740     | 1.890                  |
| 7-100-024Q | NMTB 50   | 2                 | 0.906     | 1.260                  |
| 7-100-025Q | NMTB 50   | 3                 | 1.299     | 1.575                  |
| 7-100-030Q | NMTB 50   | 4                 | 2.087     | 1.890                  |
| 7-100-035Q | NMTB 50   | 5                 | 3.386     | 2.480                  |

### 1650

- Reduction adapters for NMTB tapers



| Code No.  | K<br>7:24 | K <sub>1</sub><br>7:24 | A<br>[in] |
|-----------|-----------|------------------------|-----------|
| 7-110-005 | NMTB 40   | 30                     | 0.511     |
| 7-110-010 | NMTB 50   | 30                     | 0.626     |
| 7-110-015 | NMTB 50   | 40                     | 0.626     |

7657

7349

7311 QC L

7311 QC

5370

1657 QC

1650