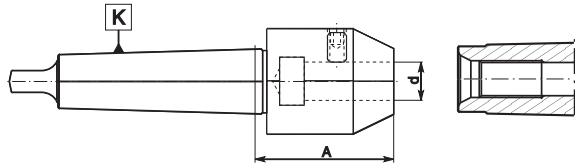


7720

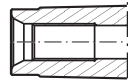
- End mill holders with MT shank
- Tanged



7720

7721

- End mill holders with MT shank
- With drawbar thread

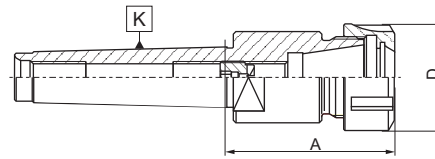
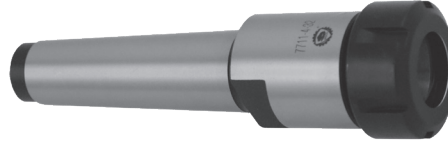


7721

Code No.		K MT	d [in]	A [in]	
7720	7721				
7-155-005	7-150-005	2	3/16	2.008	7-195-091
7-155-007	7-150-007	2	1/4	2.008	7-195-110
7-155-010	7-150-010	2	3/8	2.008	7-195-208
7-155-015	7-150-015	2	1/2	3.465	7-195-314
7-155-020	7-150-020	2	5/8	2.717	7-195-412
7-155-025	7-150-025	3	3/16	2.008	7-195-091
7-155-027	7-150-027	3	1/4	2.008	7-195-110
7-155-030	7-150-030	3	3/8	2.008	7-195-208
7-155-035	7-150-035	3	1/2	2.126	7-195-314
7-155-040	7-150-040	3	5/8	3.976	7-195-412
7-155-045	7-150-045	3	3/4	2.835	7-195-513
7-155-050	7-150-050	4	3/8	2.067	7-195-208
7-155-055	7-150-055	4	1/2	2.185	7-195-314
7-155-060	7-150-060	4	5/8	2.264	7-195-412
7-155-065	7-150-065	4	3/4	2.420	7-195-513
7-155-070	7-150-070	4	7/8	2.500	7-195-513
7-155-075	7-150-075	4	1	3.169	7-195-615
7-155-080	7-150-080	5	3/8	2.067	7-195-208
7-155-085	7-150-085	5	1/2	2.185	7-195-314
7-155-090	7-150-090	5	5/8	2.264	7-195-412
7-155-095	7-150-095	5	3/4	2.500	7-195-513
7-155-100	7-150-100	5	7/8	2.420	7-195-513
7-155-105	7-150-105	5	1	2.736	7-195-615
7-155-110	7-150-110	5	1-1/4	2.815	7-195-615
7-155-115	7-150-115	5	1-1/2	3.500	7-195-615
7-155-120	7-150-120	5	2	4.197	7-195-820

7711

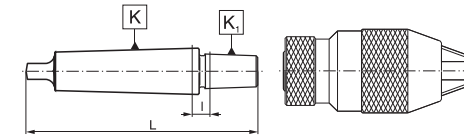
- Collet chucks for ER collets



Code No.	K MT	Collet size	A [in]	Clamping range [in]	D [in]	
7-171-3216	2	ER16	1.71	0.079 - 0.394	1.26	7-188-816
7-171-3220	2	ER20	1.87	0.125 - 0.500	1.38	7-188-820
7-171-3225	2	ER25	2.24	0.047 - 0.625	1.65	7-188-825
7-171-3232	2	ER32	2.58	0.125 - 0.750	1.97	7-188-832
7-171-3316	3	ER16	1.71	0.079 - 0.394	1.26	7-188-816
7-171-3320	3	ER20	1.79	0.125 - 0.500	1.38	7-188-820
7-171-3325	3	ER25	2.68	0.047 - 0.625	1.65	7-188-825
7-171-3303	3	ER32	2.89	0.125 - 0.750	1.97	7-188-832
7-171-3340	3	ER40	3.35	0.125 - 1.000	2.48	7-188-840
7-171-3425	4	ER25	2.15	0.047 - 0.625	1.65	7-188-825
7-171-3432	4	ER32	3.31	0.125 - 0.750	1.97	7-188-832
7-171-3440	4	ER40	3.15	0.125 - 1.000	2.48	7-188-840
7-171-3532	5	ER32	2.58	0.125 - 0.750	1.97	7-188-832
7-171-3540	5	ER40	2.66	0.125 - 1.000	2.48	7-188-840

5362

- Drill chuck mandrels for Jacobs taper with tang



Code No.	K MT	K ₁ Jacobs	L [in]	I [in]
7-052-101	1	1	3.30	0.2
7-052-102	1	2	3.50	0.2
7-052-103	1	3	4.00	0.3
7-052-106	1	6	3.70	0.3
7-052-133	1	33	3.70	0.3
7-052-201	2	1	4.00	0.4
7-052-202	2	2	4.20	0.3
7-052-203	2	3	4.40	0.3
7-052-206	2	6	4.20	0.3
7-052-233	2	33	4.20	0.3
7-052-302	3	2	5.00	0.4
7-052-303	3	3	5.20	0.3
7-052-304	3	4	5.70	0.4
7-052-305	3	5	6.00	0.5
7-052-306	3	6	5.00	0.4
7-052-333	3	33	5.00	0.3
7-052-403	4	3	6.30	0.5
7-052-404	4	4	6.70	0.4
7-052-405	4	5	6.90	0.4
7-052-406	4	6	6.10	0.5
7-052-433	4	33	6.10	0.5
7-052-503	5	3	7.60	0.5
7-052-504	5	4	8.00	0.5
7-052-505	5	5	8.20	0.5
7-052-506	5	6	7.30	0.5
7-052-533	5	33	7.40	0.6