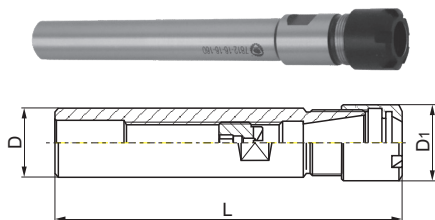




7812

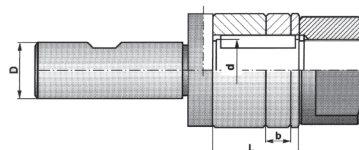
■ Collet chucks for ER collets



Code No.	D [in]	Collet size	L [in]	D ₁ [in]		
7-171-1105	1/2	ER11	6.2	0.630	7-171-951	7-171-961
7-171-1106	5/8	ER11	6.2	0.630	7-171-951	7-171-961
7-171-1606	5/8	ER16	6	0.875	7-171-966	7-171-976
7-171-1607	3/4	ER16	6.5	0.875	7-171-966	7-171-976
7-171-2007	3/4	ER20	5.5	1.338	7-188-821	7-171-982
7-171-2009	1	ER20	5.5	1.338	7-188-821	7-171-982
7-171-2303	3/4	ER25	6.5	1.650	7-188-825	7-188-9025
7-171-2305	1	ER25	6.5	1.650	7-188-825	7-188-9025
7-171-3001	1	ER32	3.75	1.970	7-188-832	7-188-9032
7-171-4001	1	ER40	4.5	2.480	7-188-840	7-188-9040
7-171-4002	1-1/4	ER40	4.75	2.480	7-188-840	7-188-9040

7565

■ Stub milling machine Arbors with Weldon shank



Code No.	Shank Dia D [in]	Arbor dia d [in]	A [in]	Wrench size [in]	L [in]
7-072-005	1/2	1/2	0.87	0.75	1.00
7-072-010	1/2	5/8	1.00	0.87	1.00
7-072-015	1/2	3/4	1.16	1.00	1.00
7-072-020	3/4	1/2	0.87	0.75	1.00
7-072-025	3/4	5/8	1.00	0.87	1.00
7-072-030	3/4	3/4	1.16	1.00	1.00
7-072-035	3/4	7/8	1.37	1.12	1.00
7-072-040	3/4	1	1.50	1.12	1.00
7-072-045	3/4	1-1/4	1.75	1.50	1.00

5312

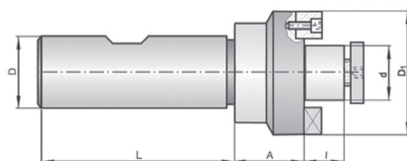
■ Driver arbors for reamers





Code No.	Shank D [in]	d [in]	L [in]	E [in]			
7-068-004	1/2	3/8	9.00	2.25	7-068-954	7-068-904	7-068-804
7-068-005	5/8	1/2	9.50	2.50	7-068-955	7-068-905	7-068-804
7-068-006	3/4	5/8	10.00	2.75	7-068-956	7-068-906	7-068-806
7-068-007	7/8	3/4	11.00	3.00	7-068-957	7-068-907	7-068-807
7-068-008	1 1/8	1	12.00	3.50	7-068-958	7-068-908	7-068-807
7-068-009	1 3/8	1 1/4	13.00	3.75	7-068-959	7-068-909	7-068-809
7-068-010	1 5/8	1 1/2	15.55	4.00	7-068-960	7-068-910	7-068-810
7-068-011	2	1 3/4	16.73	4.50	7-068-961	7-068-911	7-068-811
7-068-012	2 1/8	2	17.52	5.00	7-068-962	7-068-912	7-068-811

7567

■ Straight shank shell mill arbors



Code No.	D [in]	d [in]	A [in]	I [in]	D1 [in]	L [in]		
7-064-005	3/4	0.75	0.703	0.672	1.750	2.00	7-080-110	7-080-010
7-064-010	1	1.00	0.714	0.672	2.125	2.28	7-080-115	7-080-015
7-064-015	1	1.25	0.845	0.672	2.500	2.28	7-080-120	7-080-020
7-064-025	1-1/4	0.75	1.000	0.690	1.770	2.28	7-080-110	7-080-010
7-064-030	1-1/4	1.00	1.000	0.690	2.280	2.28	7-080-115	7-080-015

7725-S

■ Annular cutter holders for straight shank



Code No.	Type	Shank Size [in]	Shank Type	Cutter Shank Size [in]	Gage Length [in]
7-980-100	HEN-1	1/2	3 flats	3/4	2-1/8
7-980-200	HEN-2	3/4	3 flats	3/4	2
7-980-206	HEN-2-6	3/4	3 flats	3/4	3
7-980-212	HEN-2-12	3/4	3 flats	3/4	12
7-983-906	HEN-9-6	3/4	2 flats	3/4	6
7-980-900H	Spare ejecting spring	3/4	-	1-1/4	12