

7819

7816

7814

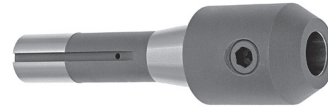
■ R8 Collet chucks for ER, TG or DA collets



Code No.	Type	Shank	Collet Type	L [in]	D [in]		
7-171-1608	7814	R8	ER16	1.490	1.26	7-188-816	7-188-9016
7-171-2008	7814	R8	ER20	1.770	1.38	7-188-820	7-188-9020
7-171-2508	7814	R8	ER25	1.970	1.65	7-188-825	7-188-9025
7-171-3008	7814	R8	ER32	2.280	1.97	7-188-832	7-188-9032
7-171-4008	7814	R8	ER40	2.360	2.48	7-188-840	7-188-9040
7-161-110	7819	R8	TG100	3.125	2.50	7-180-9100	7-180-930
7-167-020	7816	R8	DA180	2.780	1.54	7-193-818	7-193-918

7820

■ End mill holders with R8 shank



Code No.	Shank	Hole Dia [in]	Gage Length [in]	Set Screw
7-160-005	R8	3/16	1.300	7-195-091
7-160-007	R8	1/4	1.300	7-195-110
7-160-010	R8	3/8	1.300	7-195-208
7-160-015	R8	1/2	1.300	7-195-314
7-160-020	R8	5/8	1.496	7-195-412
7-160-025	R8	3/4	2.362	7-195-513
7-160-030	R8	7/8	2.736	7-195-513
7-160-035	R8	1	3.228	7-195-615
7-160-040	R8	1-1/4	3.228	7-195-615
7-160-045	R8	1-1/2	3.740	7-195-615

1855

■ Morse taper adapters for R8 shank



Code No.	Shank	MT Socket	Drawbar Thread [in]
7-115-005	R8	2	7/16-20
7-115-010	R8	3	7-16-20

7725-R

■ Annular cutter holders for R8 shank



Code No.	Type	Shank	Cutter Shank Size [in]	Gage Length [in]
7-982-500	HEN-5	R8	3/4	1-3/4

7567

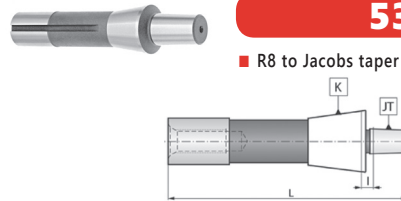
■ R8 shell mill arbors



Code No.	Arbor Dia [in]	Shank	Gage Length [in]
7-065-005	1/2	R8	1.024
7-065-010	3/4	R8	0.945
7-065-015	1	R8	0.945
7-065-020	1-1/4	R8	0.945
7-065-025	1-1/2	R8	0.945

5355

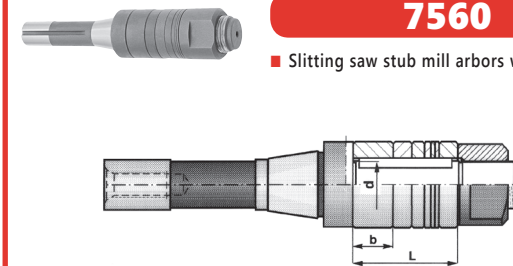
■ R8 to Jacobs taper adapters



Code No.	Shank Size K	Jacobs Taper JT	L [in]	l [in]
7-052-801	R8	1	5.00	0.87
7-052-802	R8	2	5.18	0.90
7-052-803	R8	3	5.57	1.04
7-052-806	R8	6	5.27	1.03
7-052-804	R8	4	5.95	1.03
7-052-805	R8	5	6.16	1.10
7-052-833	R8	33	5.35	0.94

7560

■ Slitting saw stub mill arbors with R8 shank



Code No.	Shank	Arbor dia d [in]	D [in]	Wrench size [in]	L [in]	Overall Length [in]	Nut
7-070-005	R8	1	1.50	1.25	2	8.3	7-030-010R
7-070-010	R8	1-1/4	1.75	1.50	2	8.5	7-030-015R