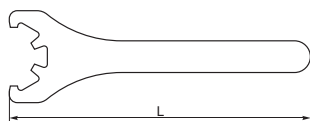


KL 9833

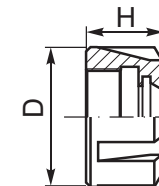
■ Wrench for standard type nuts 9833



Code No.	Type	For Type	L [mm]
7-188-9016	KL9833-ER16	ER16	150
7-188-9020	KL9833-ER20	ER20	170
7-188-9025	KL9833-ER25	ER25	190
7-188-9032	KL9833-ER32	ER32	240
7-188-9040	KL9833-ER40	ER40	270
7-188-9050	KL9833-ER50	ER50	340

9833

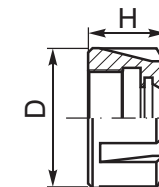
■ Standard type ER (DIN 6499) collet nuts



Code No.	Type	For Type	D [mm]	H [mm]
7-188-816	9833-16	ER16	32	17.5
7-188-820	9833-20	ER20	35	19.0
7-188-825	9833-25	ER25	42	20.0
7-188-832	9833-32	ER32	50	22.5
7-188-840	9833-40	ER40	63	25.5

9833-ES

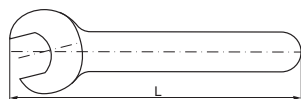
■ Balanced ER (DIN 6499) collet nuts



Code No.	Type	For Type	D [mm]	H [mm]
7-178-816E	9833-16 ES	ER16	32	17.5
7-178-820E	9833-20 ES	ER20	35	19.0
7-178-825E	9833-25 ES	ER25	42	20.0
7-178-832E	9833-32 ES	ER32	50	22.5
7-178-840E	9833-40 ES	ER40	63	25.5

KL 9833-D

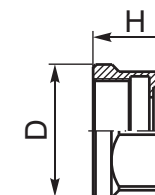
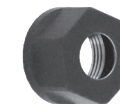
■ Wrench for hexagon type nuts 9833-D



Code No.	Type	For Type	L [mm]
7-188-911	KL9833-11D	ER11	125
7-178-916	KL9833-16D	ER16	170
7-171-982	KL9833-20D	ER20	140

9833-D

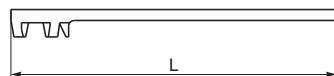
■ Hexagon ER collet nuts (DIN 6499)



Code No.	Type	For Type	D [mm]	H [mm]
7-188-811	9833-11 D	ER11	19	11.0
7-178-816	9833-16 D	ER16	28	17.5
7-188-821	9833-20 D	ER20	34	20.0

KL 9833-S

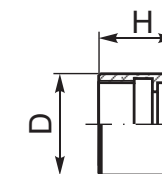
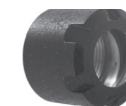
■ Wrench for mini type nuts 9833-S



Code No.	Type	For Type	L [mm]
7-171-961	KL 9833-11S	ER11	95
7-171-976	KL 9833-16S	ER16	119
7-171-984	KL 9833-20S	ER20	131
7-171-996	KL 9833-25S	ER25	143

9833-S

■ Mini type ER collet nuts (DIN 6499)



Code No.	Type	For Type	D [mm]	H [mm]
7-171-951	9833-11 S	ER11	16	12
7-171-966	9833-16 S	ER16	22	18
7-171-974	9833-20 S	ER20	28	19
7-171-986	9833-25 S	ER25	35	20

1
2
3
4
5
6