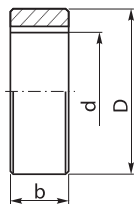


## 7285

■ Spacer rings for milling arbors

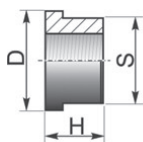
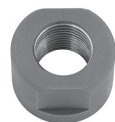


| Code No.  | Width of Spacer „b“ [in] | d [in] | D [in] | Width of keyway [in] |
|-----------|--------------------------|--------|--------|----------------------|
| 7-020-005 | 0.0625                   | 0.875  | 1.375  | 0.125                |
| 7-020-015 | 0.1250                   | 0.875  | 1.375  | 0.125                |
| 7-020-025 | 0.2500                   | 0.875  | 1.375  | 0.125                |
| 7-020-035 | 0.3750                   | 0.875  | 1.375  | 0.125                |
| 7-020-045 | 0.5000                   | 0.875  | 1.375  | 0.125                |
| 7-020-050 | 0.6250                   | 0.875  | 1.375  | 0.125                |
| 7-020-055 | 0.7500                   | 0.875  | 1.375  | 0.125                |
| 7-020-065 | 1.0000                   | 0.875  | 1.375  | 0.125                |
| 7-020-075 | 1.2000                   | 0.875  | 1.375  | 0.125                |
| 7-020-080 | 2.0000                   | 0.875  | 1.375  | 0.125                |
| 7-020-090 | 0.0625                   | 1.000  | 1.500  | 0.250                |
| 7-020-095 | 0.0938                   | 1.000  | 1.500  | 0.250                |
| 7-020-100 | 0.1250                   | 1.000  | 1.500  | 0.250                |

| Code No.  | Width of Spacer „b“ [in] | d [in] | D [in] | Width of keyway [in] |
|-----------|--------------------------|--------|--------|----------------------|
| 7-020-105 | 0.1875                   | 1.000  | 1.500  | 0.250                |
| 7-020-110 | 0.2500                   | 1.000  | 1.500  | 0.250                |
| 7-020-115 | 0.3125                   | 1.000  | 1.500  | 0.250                |
| 7-020-120 | 0.3750                   | 1.000  | 1.500  | 0.250                |
| 7-020-125 | 0.4375                   | 1.000  | 1.500  | 0.250                |
| 7-020-130 | 0.5000                   | 1.000  | 1.500  | 0.250                |
| 7-020-135 | 0.6250                   | 1.000  | 1.500  | 0.250                |
| 7-020-140 | 0.7500                   | 1.000  | 1.500  | 0.250                |
| 7-020-150 | 1.0000                   | 1.000  | 1.500  | 0.250                |
| 7-020-155 | 1.2500                   | 1.000  | 1.500  | 0.250                |
| 7-020-160 | 1.5000                   | 1.000  | 1.500  | 0.250                |
| 7-020-165 | 2.0000                   | 1.000  | 1.500  | 0.250                |
| 7-020-170 | 3.0000                   | 1.000  | 1.500  | 0.250                |
| 7-020-175 | 0.0625                   | 1.250  | 1.750  | 0.313                |
| 7-020-185 | 0.1250                   | 1.250  | 1.750  | 0.313                |
| 7-020-190 | 0.1875                   | 1.250  | 1.750  | 0.313                |
| 7-020-195 | 0.2500                   | 1.250  | 1.750  | 0.313                |
| 7-020-200 | 0.3125                   | 1.250  | 1.750  | 0.313                |
| 7-020-205 | 0.3750                   | 1.250  | 1.750  | 0.313                |
| 7-020-215 | 0.5000                   | 1.250  | 1.750  | 0.313                |
| 7-020-220 | 0.6250                   | 1.250  | 1.750  | 0.313                |
| 7-020-225 | 0.7500                   | 1.250  | 1.750  | 0.313                |
| 7-020-230 | 0.8750                   | 1.250  | 1.750  | 0.313                |
| 7-020-235 | 1.0000                   | 1.250  | 1.750  | 0.313                |
| 7-020-240 | 1.2500                   | 1.250  | 1.750  | 0.313                |

| Code No.  | Width of Spacer „b“ [in] | d [in] | D [in] | Width of keyway [in] |
|-----------|--------------------------|--------|--------|----------------------|
| 7-020-245 | 1.5000                   | 1.250  | 1.750  | 0.313                |
| 7-020-250 | 2.0000                   | 1.250  | 1.750  | 0.313                |
| 7-020-255 | 3.0000                   | 1.250  | 1.750  | 0.313                |
| 7-020-260 | 0.0625                   | 1.500  | 2.125  | 0.375                |
| 7-020-265 | 0.0938                   | 1.500  | 2.125  | 0.375                |
| 7-020-270 | 0.1250                   | 1.500  | 2.125  | 0.375                |
| 7-020-275 | 0.1875                   | 1.500  | 2.125  | 0.375                |
| 7-020-280 | 0.2500                   | 1.500  | 2.125  | 0.375                |
| 7-020-285 | 0.3125                   | 1.500  | 2.125  | 0.375                |
| 7-020-290 | 0.3750                   | 1.500  | 2.125  | 0.375                |
| 7-020-300 | 0.5000                   | 1.500  | 2.125  | 0.375                |
| 7-020-310 | 0.7500                   | 1.500  | 2.125  | 0.375                |
| 7-020-320 | 1.0000                   | 1.500  | 2.125  | 0.375                |
| 7-020-325 | 1.2500                   | 1.500  | 2.125  | 0.375                |
| 7-020-335 | 2.0000                   | 1.500  | 2.125  | 0.375                |
| 7-020-340 | 3.0000                   | 1.500  | 2.125  | 0.375                |
| 7-020-395 | 0.1250                   | 2.000  | 2.750  | 0.500                |
| 7-020-400 | 0.1875                   | 2.000  | 2.750  | 0.500                |
| 7-020-405 | 0.2500                   | 2.000  | 2.750  | 0.500                |
| 7-020-415 | 0.3750                   | 2.000  | 2.750  | 0.500                |
| 7-020-425 | 0.5000                   | 2.000  | 2.750  | 0.500                |
| 7-020-435 | 0.7500                   | 2.000  | 2.750  | 0.500                |
| 7-020-445 | 1.0000                   | 2.000  | 2.750  | 0.500                |
| 7-020-460 | 2.0000                   | 2.000  | 2.750  | 0.500                |
| 7-020-465 | 3.0000                   | 2.000  | 2.750  | 0.500                |

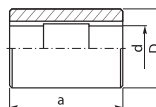
RIGHT HAND NUTS FOR MILLING ARBORS



| Code No.   | Arbor Dia [in] | Thread Size RH | Height H [in] | Flat S [in] | OD D [in] |
|------------|----------------|----------------|---------------|-------------|-----------|
| 7-030-005R | 0.875          | 7/8-14         | 0.75          | 1.125       | 1.38      |
| 7-030-010R | 1.000          | 1-14           | 0.88          | 1.250       | 1.62      |
| 7-030-015R | 1.250          | 1-1/4-12       | 0.88          | 1.250       | 1.62      |
| 7-030-020R | 1.500          | 1-1/2-12       | 1.31          | 1.813       | 2.10      |
| 7-030-025R | 2.000          | 2-12           | 1.75          | 2.375       | 2.72      |

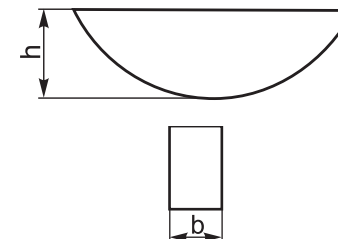
## 7275

■ Cylindrical bushings for milling arbors



| Code No.  | D [in] | d [in] | a [in] | Width of keyway |
|-----------|--------|--------|--------|-----------------|
| 7-025-005 | 1.625  | 0.875  | 2.625  | 0.125           |
| 7-025-010 | 1.625  | 1.000  | 2.625  | 0.250           |
| 7-025-015 | 1.875  | 1.250  | 2.625  | 0.313           |
| 7-025-020 | 1.875  | 0.875  | 3.125  | 0.125           |
| 7-025-025 | 1.875  | 1.000  | 3.125  | 0.250           |
| 7-025-030 | 1.875  | 1.250  | 3.125  | 0.313           |
| 7-025-035 | 2.125  | 0.875  | 3.750  | 0.125           |
| 7-025-040 | 2.125  | 1.000  | 3.750  | 0.250           |
| 7-025-045 | 2.125  | 1.250  | 3.750  | 0.313           |
| 7-025-050 | 2.125  | 1.500  | 3.750  | 0.375           |
| 7-025-055 | 2.750  | 0.875  | 4.250  | 0.125           |
| 7-025-060 | 2.750  | 1.000  | 4.250  | 0.250           |
| 7-025-065 | 2.750  | 1.250  | 4.250  | 0.313           |
| 7-025-070 | 2.750  | 1.500  | 4.250  | 0.375           |
| 7-025-075 | 2.750  | 2.000  | 4.250  | 0.500           |

DRIVE KEY C



| Code No.  | Type     | b [mm] | h [mm] |
|-----------|----------|--------|--------|
| 7-068-804 | U-0097/0 | 3      | 3.7    |
| 7-068-806 | U-0648/0 | 4      | 4.0    |
| 7-068-807 | U-0098/0 | 5      | 6.5    |
| 7-068-809 | U-0649/0 | 8      | 11.0   |
| 7-068-810 | U-0650/0 | 10     | 16.0   |
| 7-068-811 | U-0106/0 | 12     | 19.0   |

1  
2  
3  
4  
5  
6