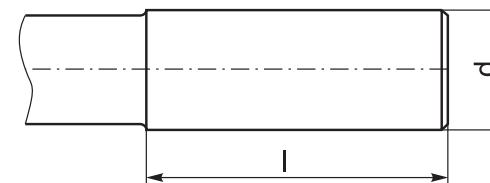


CYLINDRICAL SHANK

Standard features of the tools:

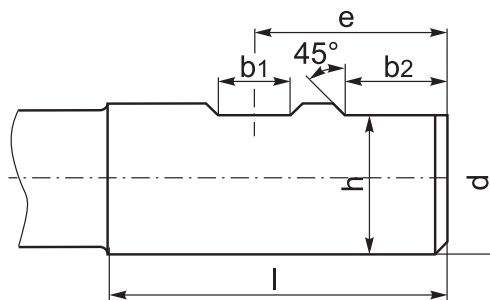
- Manufactured with Chrome Manganese steel
- Carburized with depth of case 0.7 mm
- Hardened and precision ground
- Surface hardness HRC 58±2

Type A



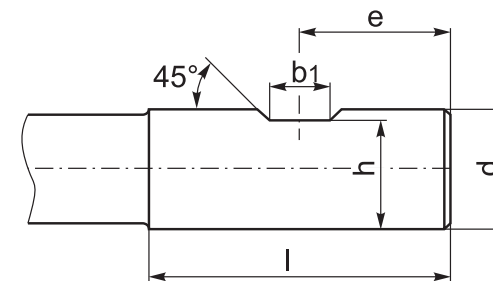
Type B

- Type B - with two clamping flats (Weldon)
- d = 7/8" - 2-1/2"



Type B

- Type B - with one clamping flat (Weldon)
- d = 3/8" - 2-1/2"



d [in]	l [in]	e [in]	b ₁ min [in]	b ₁ max [in]	h [in]	b ₂ [in]
3/8	1-9/16	25/32	0.280	0.282	0.325	-
1/2	1-25/32	57/64	0.330	0.332	0.440	-
5/8	1-29/32	61/64	0.400	0.402	0.560	-
3/4	2-1/32	1-1/64	0.455	0.457	0.685	-
7/8	2-1/32	1-1/64	0.455	0.457	0.810	1/2
1	2-9/32	1-9/64	0.515	0.517	0.925	1/2
1-1/4	2-9/32	1-9/64	0.515	0.517	1.156	1/2
1-1/2	2-11/16	1-3/16	0.515	0.517	1.406	9/16
2	3-1/4	1-27/32	0.700	0.702	1.900	27/32
2-1/2	3-1/2	1-15/16	0.700	0.702	2.400	27/32

- 1
- 2
- 3
- 4
- 5
- 6
- 7